

PROMOTECH[®]

WELDING



WELDING



CUTTING



CUTTING



*smart tools
for heavy tasks*

**WELDING & CUTTING
TRACTORS**

PROMOTECH – PROFESSIONAL MANUFACTURER OF PREMIUM MACHINES FOR METALWORKING INDUSTRY

Promotech is an innovation driven ISO 9001:2015 manufacturer of professional metalworking machines, welding automation equipment and industrial systems designed for structural steel fabricators, heavy machinery manufacturers, shipyards and other metal machining companies

Main product lines:

- mag drills, pneumatic drills, rail drills and hydraulic punchers
- weld preparation/portable and stationary bevellers for plates and pipes
- welding and cutting portable mechanisation equipment
- welding and cutting automated systems

Our products:

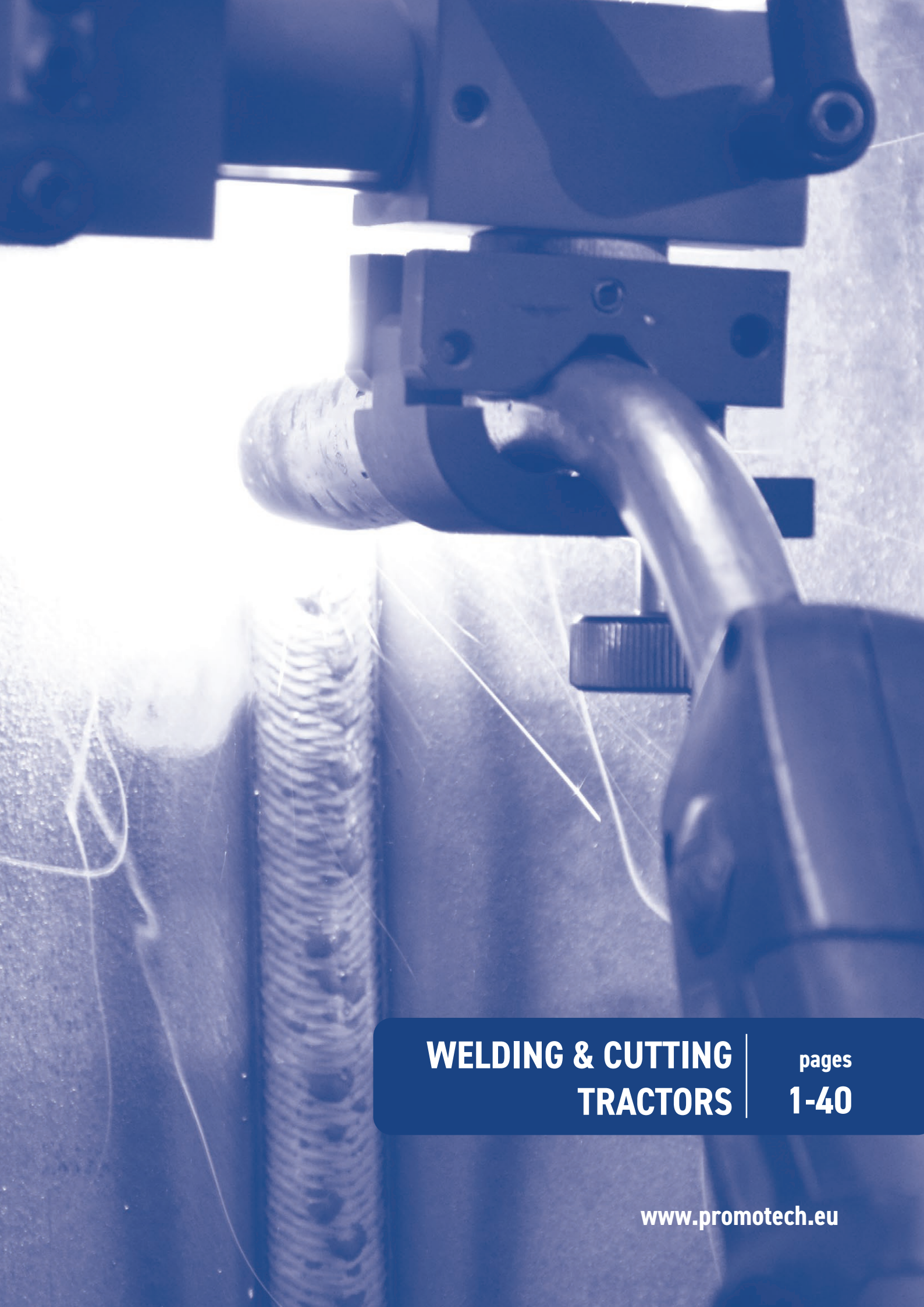
- offer solutions to reduce cost and increase productivity
- are designed and engineered for long term use in tough industrial conditions
- meet the requirements of the most demanding clients and markets worldwide
- are made in Poland according to the highest quality standards
- include top quality components
- are thoroughly tested for quality approval
- proved to be extremely reliable with a variety of practical applications in most difficult climatic environments



Mitglied im DVS – Deutscher Verband für Schweißen und verwandte Verfahren e. V.



FOLLOW US FOR UPDATE AND MORE



**WELDING & CUTTING
TRACTORS**

pages
1-40

www.promotech.eu



WELDING AND CUTTING TRACTORS



MINI SPIDER



GECKO



GECKO HS



GECKO BATTERY



LIZARD



OSC-8 Pendulum weave welder



RAIL TUG



RAIL BULL



RAIL TITAN



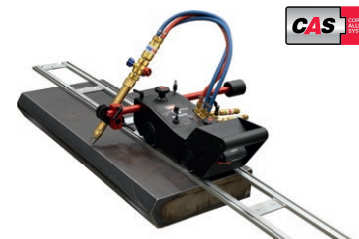
VACUUM TRACK SYSTEM



DRAGON



DRAGON HS



DRAGON BATTERY



MINI SPIDER | FILLET WELDING TRACTOR



The Mini Spider is a battery-powered welding tractor designed to produce continuous fillet welds using MIG/MAG torches. The torch can be easily swapped from one side of Mini Spider to another.

4-wheel drive system with magnetic traction and a feedback loop provides highly efficient speed stabilization.

Constant, continuous and repeatable travel speed enables weld bead geometry that is exact to the required specifications, thus reducing costly over welding and substantially decreasing filler metal usage.

Features and benefits:

- Compact and lightweight design to weld in narrow spaces
- Convenient 18 V DC battery supply (the same battery for both Mini Spider and Gecko Battery)
- Torch placement on either side
- Welding edge to edge
- Closed-loop speed control system based on electric motor with encoder - ensures increased speed accuracy
- Consistent heat input reduces distortion
- Reduces wasted filler metal - eliminates over welding
- Digital LED display for presetting of travel speed and diagnostic messages
- Low-battery indicator
- Built-in guide rollers

New control system of battery pack:

Detection and supervised parameters:

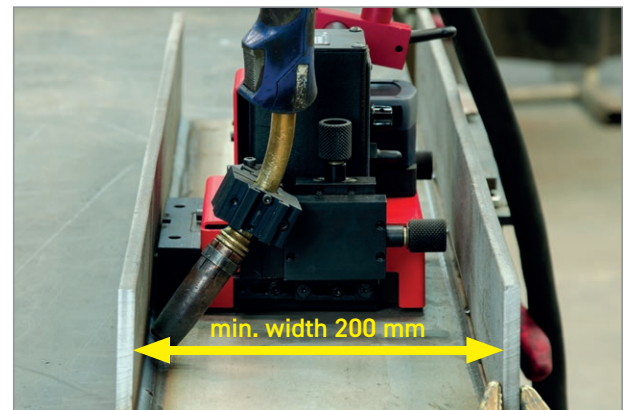
- too low and too high voltage
- too low and too high temperature
- failure of the temperature sensor
- internal battery failure

Benefits:

- over discharge protection
- extended battery life
- high level of safety for both tractor and operator



Welding edge to edge



Welding in narrow spaces

MINI SPIDER TECHNICAL SPECIFICATION	
Voltage	18 V DC, 4.0 Ah
Power	25 W
Welding position (according to EN ISO 6947 and AWS/ASME)	PB / 2F PA / 1F
Torch diameter	16-22 mm (0.63-0.87")
Min. workpiece thickness	4 mm (0.16")
Ground clearance	4 mm (0.16")
Horizontal pulling force	150 N
Horizontal speed *	5-110 cm/min (2-43.3 in/min)
Cross slide adjustment range	0-21 mm (0-0.83") up down, left-right
Weight (w/o battery)	7.6 kg (16.8 lbs)
Product code	WOZ-0735-10-00-00-0

* With battery fully charged



Continuous welding



Horizontal speed
5-110 cm/min



Torch placement
on either side



Welding in
narrow spaces



Weight 7,6 kg

Standard accessories:



Battery Charger
LDW-0738-10-00-30-0 (EU)
LDW-0738-06-00-30-0 (AUS/NZ)
LDW-0738-04-00-30-0 (UK)



Battery 4.0 Ah
AKM-0738-10-00-01-0
(2 pcs included)



Torch holder
ZCS-0270-42-00-00-0

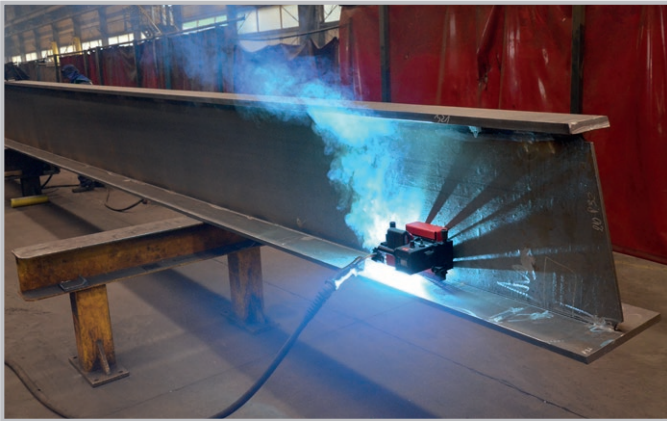


Cable anchor
PDT-0526-21-00-00-0



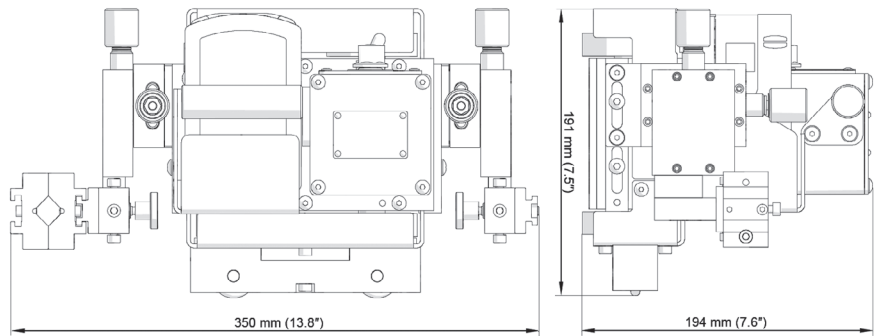
Auxiliary magnet blocks
ZST-0655-09-00-00-0

Torch placement on either side



Standard shipping set:

- Mini Spider Battery tractor
- Foam-filled cardboard box
- Battery 4.0 Ah (2 pcs)
- 4 mm hex wrench
- 3 mm hex wrench
- Operator's Manual



GECKO | COMPACT WELDING TRACTOR



Gecko is a portable trackless welding tractor that features a 4-wheel drive system with magnetic traction and a control loop feedback mechanism that provides speed stabilization in all welding positions.

Constant, continuous, and repeatable travel speed enables weld bead geometry that is exact to the required specifications, thus reducing costly over welding and decreasing filler metal usage, substantially.

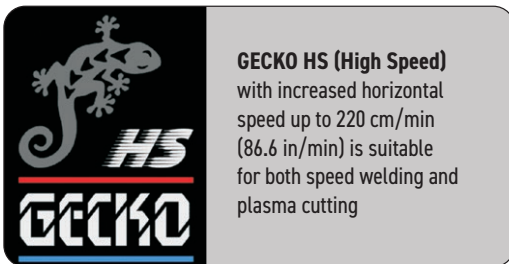
Users can select arc ignition times of up to 5 seconds at the start and end of tractor travel to create a preferred weld fill at both ends.

A wide range of accessories makes Gecko suitable for a variety of positions and applications.

A compact design tractor weighing 8 kg can be carried anywhere.

Applications:

- Trailer manufacturing
- Truck tanks
- Oil tanks
- Water storage tanks
- Transformers
- Shipyards
- Any application demanding a long, continuous fillet weld

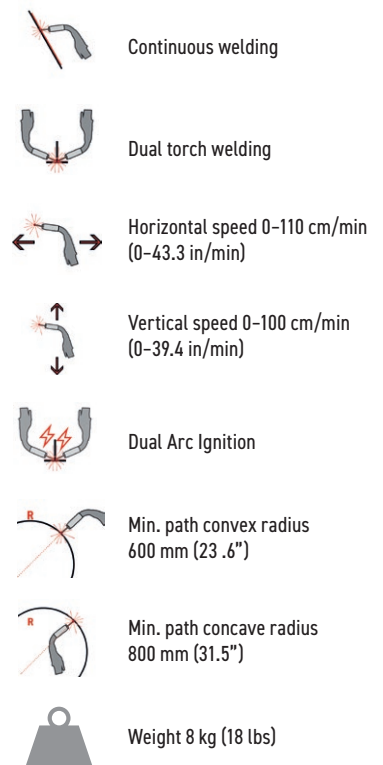


GECKO HS (High Speed)
with increased horizontal speed up to 220 cm/min (86.6 in/min) is suitable for both speed welding and plasma cutting

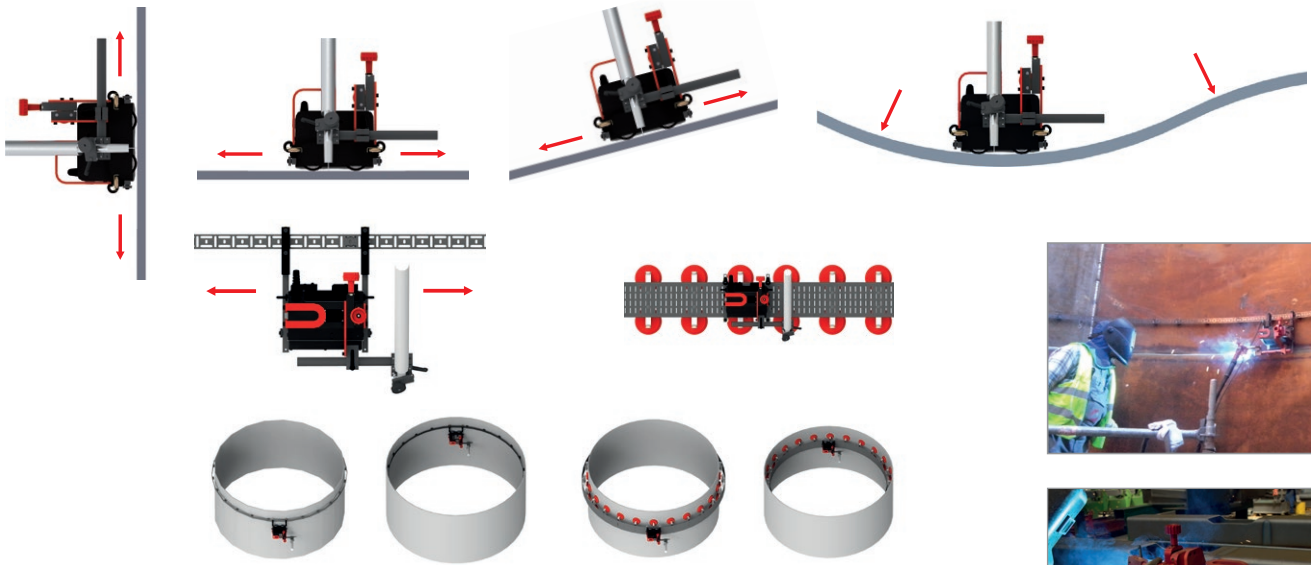
42V AC version available



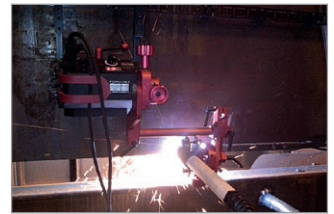
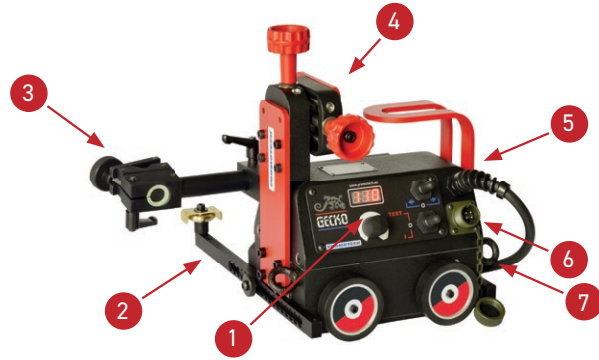
TECHNICAL SPECIFICATIONS	GECKO	GECKO HS
Voltage	1~ 115-230 V, 50-60 Hz 42 V, 50-60 Hz	1~ 115-230 V, 50-60 Hz 42 V, 50-60 Hz
Power	20 W	20 W
Welding position (according to EN ISO 6947 and AWS/ASME)	PA / 1F / 1G PB / 2F PC / 2G PD / 4F PE / 4G PG / 3F / 3G (contact dealer)	PA / 1F / 1G PB / 2F PC / 2G PD / 4F PE / 4G
Torch diameter	16-22 mm (0.63-0.87"); up to 35 mm (1.38") option	16-22 mm (0.63-0.87"); up to 35 mm (1.38") option
Minimum radius of curved workpiece surface	Outer 600 mm (23-5/8") Inner 800 mm (31-1/2")	Outer 600 mm (23-5/8") Inner 800 mm (31-1/2")
Minimum workpiece thickness	4 mm (0.16")	4 mm (0.16")
Ground clearance	4 mm (0.16")	4 mm (0.16")
Horizontal pulling force	150 N	150 N
Vertical pulling force	100 N	N/A
Cross slide adjustment range	0-35 mm (0-1.38") up down, left-right	0-35 mm (0-1.38") up down, left-right
Horizontal speed	0-110 cm/min (0-43.3 in/min)	5-220 cm/min (1.5-86.6 in/min)
Vertical speed	0-100 cm/min (0-39.4 in/min)	N/A
Weight	8 kg (18 lbs)	8 kg (18 lbs)
Welding settings storage	1 (last used)	1 (last used)
Product Code (115-230 V, 50-60 Hz, plug EU)	WOZ-0752-10-20-00-0	WOZ-0772-10-20-00-0
Product Code (115-230 V, 50-60 Hz, plug UK)	WOZ-0752-10-20-01-0	WOZ-0772-10-20-01-0
Product Code (42 V, 50-60 Hz)	WOZ-0777-10-04-00-0	WOZ-0778-10-04-00-0



Versatility of Gecko welding tractor applications including out-of-position use



1. Drive unit with control panel
2. Adjustable guide arm
3. Quick clamp torch holder
4. Cross slide assembly
5. Main power switch (0/I)
6. Weld contact / Arc ignition socket
7. Lug for fall arrester



Standard accessories



Standard guide arms (set of 2 pcs)
PRW-0752-17-00-00-0



Long rod torch holder with clamp 16-22 mm
UCW-0752-07-00-00-0



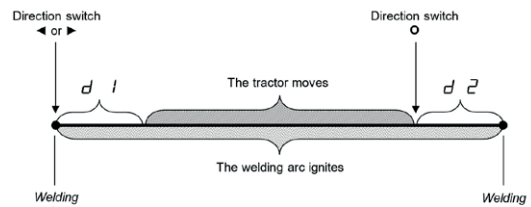
Dual arc ignition cable of 6.5 m (21 ft)
KBL-0466-17-00-00-0

Primary features and benefits of Gecko welding tractor:

- The closed-loop speed control system stabilizes travel speed, enabling uniform heat input to produce consistently high-quality welds
- Multifunctional LED display to present travel speed, units and diagnostic messages
- 4-wheel drive magnetic traction permits out-of-position use
- Possibility of pre-setting the torch activation time before and after the tractor travel for better filling of the weld seam at both ends
- Convenient Power Supply 115-230 V, 50-60 Hz or 42 V, 50-60 Hz
- Gecko produces consistently high-quality welds and cuts in a fraction of the time required by manual operations
- Reduce wasted filler metal – eliminates over welding
- Compact, lightweight design with durable aluminum cast housing
- Positive magnetic traction permits out of position use
- Heat resistant silicone wheels
- Quick clamping Torch Holder mechanism for different types of MIG/MAG torches with diameters of 16-22 mm (5/8" - 7/8"); optionally up to 35 mm (1-3/8")
- Precise torch adjustment with screw drive cross slide
- Capable of carrying and controlling 2 torches
- Self-guiding roller arms eliminate the need for track
- Multi-surface guiding with user-friendly adjustment of tractor position
- Improves working environment - removes operator from heat and fumes
- Thermal cutting possible

Pre-setting torch activation time:

- Users can now select arc ignition times of up to 5 seconds at the start and end of the GECKO travel to create a preferred weld fill at both ends.



Parameter	Value	Description
d_1	0-5 s [step: 0.5 s]	Tractor movement delay time. When the direction switch is set to ◀ or ▶: • $d_1 = 0$ s – the arc ignites and the tractor starts immediately, • $d_1 > 0$ s – the arc ignites and the tractor starts after the set time (see drawing above)
d_2	0-5 s [step: 0.5 s]	Arc out delay time. When the direction switch is set to 0: • $d_2 = 0$ s – the tractor stops and the arc goes out immediately, • $d_2 > 0$ s – the tractor stops and the arc ignites for the set time (see drawing above)

GECKO BATTERY | MOBILE WELDING TRACTOR



The GECKO BATTERY is a battery-powered trackless welding tractor designed to produce continuous butt and fillet welds using MIG/MAG torches.

CAS LiHD battery delivers enough power for handling even the toughest applications with no cables. 4-wheel drive system with magnetic traction and a feedback loop provide speed stabilization in various welding positions.

Constant, continuous and repeatable travel speed enables weld bead geometry that is exact to the required specifications, thus reducing costly over welding and substantially decreasing filler metal usage.



New control system of battery pack:

Detection and supervised parameters:

- too low and too high voltage
- too low and too high temperature
- failure of the temperature sensor
- internal battery failure

Benefits:

- over discharge protection
- extended battery life
- high level of safety for both tractor and operator

Applications:

- Trailer manufacturing
- Truck tanks
- Oil tanks
- Water storage tanks
- Transformers
- Shipyards
- Any application demanding a long, continuous fillet weld

TECHNICAL SPECIFICATIONS GECKO BATTERY

Voltage	18 V DC, 4.0 Ah	
Power	20 W	
Welding position (according to EN ISO 6947 and AWS/ASME)	Horizontal	PA / 1F / 1G PB / 2F PC / 2G PD / 4F PE / 4G
	Vertical	PF / 3G (ask dealer)
Minimum path curve radius	Outer	600 mm (23-5/8")
	Inner	800 mm (31-1/2")
Torch diameter	16-22 mm (5/8"-55/64")	
Minimum workpiece thickness	4 mm (0.16")	
Ground clearance	4 mm (0.16")	
Horizontal pulling force	150 N	
Cross slide adjustment range	0-35 mm (0-1.38") up-down, left-right	
Horizontal speed*	0-110 cm/min (0-43.3 in/min)	
Weight	8 kg (18 lbs)	
Welding settings storage	1 (last used)	
Product Code	WOZ-0776-10-00-00-0	

* With battery fully charged.



Continuous welding



Dual torch welding



Horizontal speed
0-110 cm/min (0-43.3 in/min)



Dual arc ignition



Min. path convex radius
600 mm (23.6")

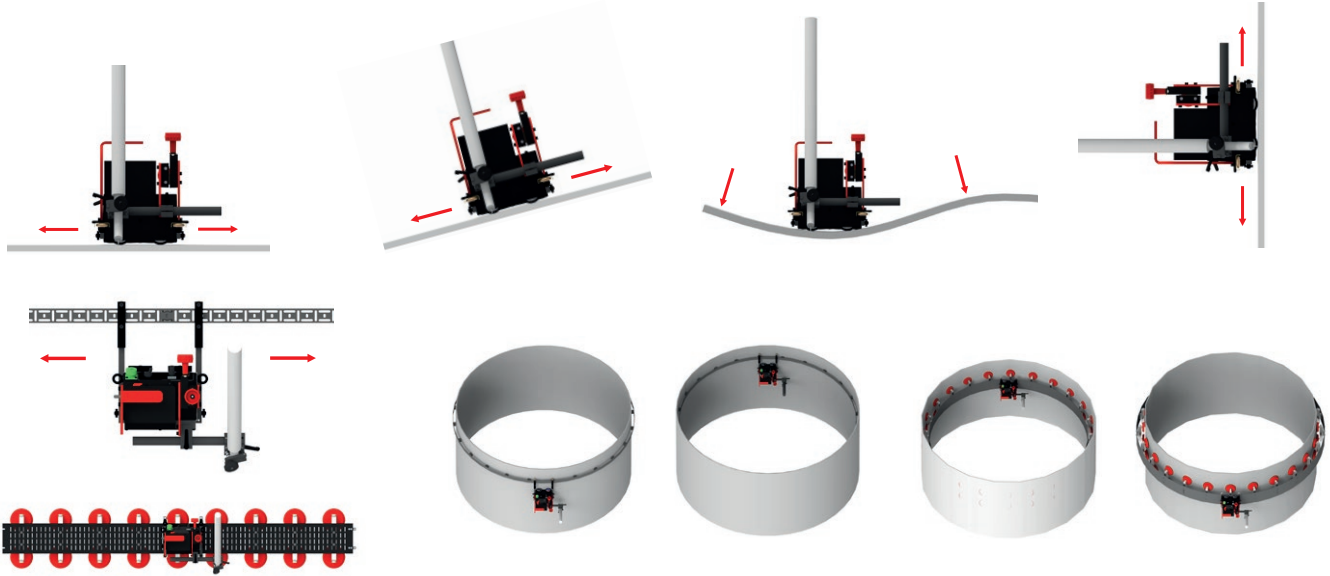


Min. path concave radius
800 mm (31.5")



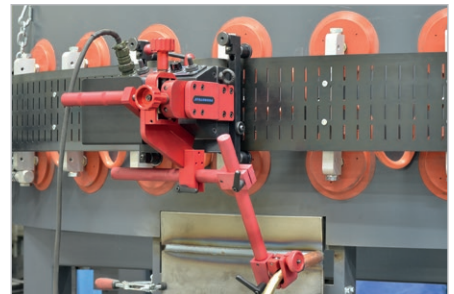
Weight 8 kg (18 lbs)

Versatility of applications including out-of-position use



Primary features and benefits of Gecko Battery Welding tractor:

- Convenient 18 V DC battery supply (the same battery for both Mini Spider and Gecko Battery)
- LiHD battery ensures maximum power availability for an extremely long time
- Intelligent battery management for long-lasting battery
- Digital speed control and stabilization for high quality welds
- Multifunctional LED display to present travel speed, units and diagnostic messages
- Compact, lightweight design with durable aluminum cast housing
- Optional accessories make Gecko Battery fit for various applications with carbon steel, stainless steel and aluminum
- Strong magnetic traction permits out of position use
- Heat resistant silicone wheels
- Quick clamping torch holder mechanism for different types of MIG/MAG torches with diameters of 16-22 mm (5/8"-7/8"); optionally up to 35 mm (1-3/8")
- Precise torch adjustment with screw drive cross slide
- Consistent heat input reduces distortion
- Reduced wasted filler metal - eliminates over welding
- Automatic arc on/off system initiates welding with travel, simultaneously
- Capable of carrying and controlling two torches
- Self-guiding roller arms eliminate the need for track
- Multi-surface guiding with user-friendly adjustment of tractor position
- Improves working environment - removes operator from heat and fumes
- Thermal cutting possible



Standard accessories:



Battery 4.0 Ah
AKM-0738-10-00-01-0
(2 pcs included)



Standard guide arms (set of 2 pcs)
PRW-0752-17-00-00-0



Dual arc ignition cable of
6.5 m (21 ft)
KBL-0466-17-00-00-0

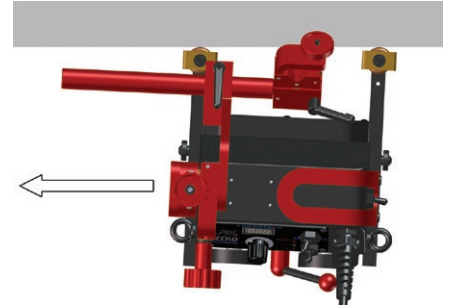


Long rod torch holder
with clamp 16-22 mm
UCW-0752-07-00-00-0

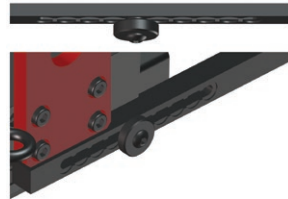
Joint accessories for Gecko, Gecko HS and Gecko Battery

Guide arms enable a proper welding tractor positioning.

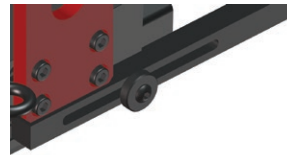
- 7 different guide types are dedicated to various welding applications and positions
- include a number of fixing grooves for your convenience
- enable simpler, easier and more consistent adjustment of how guide arms stick out
- secure proper tilting of the tractor into a direction of its movement
- maintain a permanent contact with the workpiece
- allow either interval or continuous guide arms adjustment



Each new guide arm has got a number of indented grooves only on one side. All types of guide arms are available in pairs of 2 pcs: right and left.



Interval adjustment of a degree how much the guide arms stick out



Continuous adjustment of a degree how much the guide arms stick out

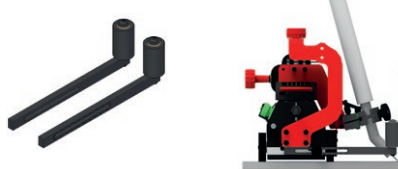


Standard guide arms (set of 2 pcs)
PRW-0752-17-00-00-0

Optional accessories for multi-surface guiding and variety of applications



Low guide arms (set of 2 pcs)
PRW-0752-12-00-00-0



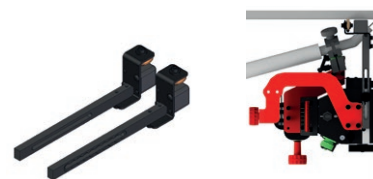
High guide arms (set of 2 pcs)
PRW-0752-13-00-00-0



Edge following guide arms (set of 2 pcs)
PRW-0466-41-00-00-1



Adjustable guide arms (set of 2 pcs)
PRW-0752-10-00-00-0



Magnet guide arms (set of 2 pcs)
PRW-0752-11-00-00-0



Track following guide arms (set of 2 pcs)
PRW-0752-14-00-00-0



Optional accessories for variety of applications



Torch clamp 16-22 mm
ZRZ-0752-07-01-00-0



Torch clip 16-22 mm
ZCS-0476-06-01-00-0



Torch clamp 22-35 mm
ZRZ-0466-19-00-00-0



Short Rod Clamp
WLK-0476-20-01-00-0



Short rod torch holder
with clip 16-22 mm
UCW-0476-27-00-00-0



Long Rod Clamp
WLK-0466-04-10-00-0



Short rod torch holder
with clamp 16-22 mm
UCW-0754-07-00-00-0



Long rod torch holder
with clip 16-22 mm
UCW-0466-22-00-00-0



Torch Extension Arm
PRD-0466-43-00-00-0



Battery Charger
LDW-0738-10-00-30-0 (EU)
LDW-0738-06-00-30-0 (AUS/NZ)
LDW-0738-04-00-30-0 (UK)



Fall arrester device
URZ-000001



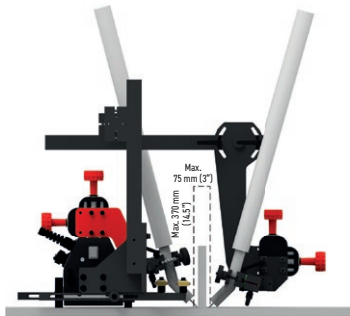
Cable anchor (Gecko)
PDT-0466-55-00-00-0



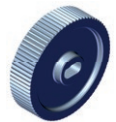
Cable anchor (Gecko Battery)
PDT-0776-04-00-00-0



Dual Torch Mount
PDT-0466-40-00-00-0



Extended cross-slide
0-76 mm (0-3") up-down,
0-35 mm (0-1.38") left-right
ZSP-0466-46-00-00-1



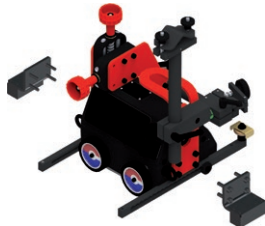
Stainless steel driving wheel
KOL-0466-72-00-00-0



Magnet blocks (front)
clamping force 55 N
BLO-0752-21-00-00-0



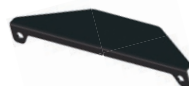
Magnet blocks (front)
clamping force 80 N
BLO-0752-22-00-00-0



Magnet blocks (back)
clamping force 55 N
BLO-0466-45-01-00-0



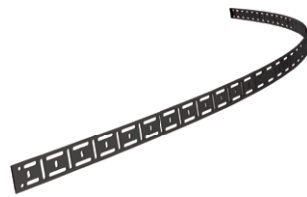
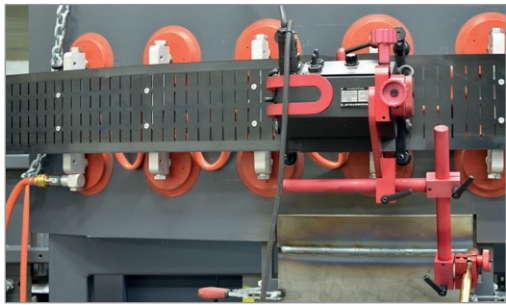
Magnet blocks (back)
clamping force 80 N
BLO-0466-48-01-00-0



Display shield (Gecko)
OSL-0466-29-00-00-0



Display shield (Gecko Battery)
OSL-0526-22-00-00-0



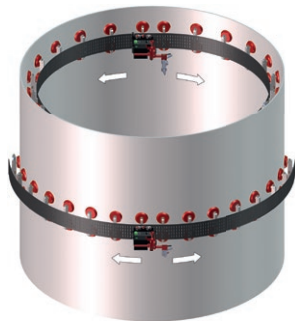
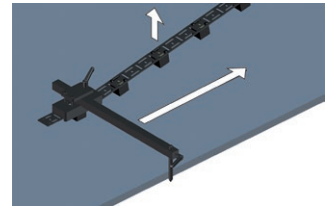
Flexible track length 185cm (6ft) 1pc
Minimum curvature radius of 1.0 m (3.3 ft)
PRW-0466-50-01-01-0



Magnetic block for flexible track
box of 10 pcs
BL0-0466-68-00-00-0



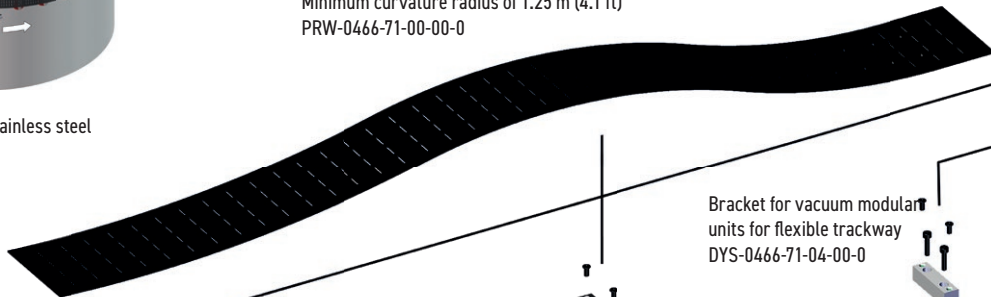
Guide adjustment tool to position the track
parallel to the edge
UST-0466-53-00-00-0



Vacuum units in use on stainless steel
or aluminum tanks

Depending on sort of fixing units in use with flexible trackway, Gecko, Gecko Battery welding tractors are suitable for applications with carbon steel, stainless steel and aluminum.

Flexible trackway length 1.88 m (6.1 ft).
Minimum curvature radius of 1.25 m (4.1 ft)
PRW-0466-71-00-00-0



Bracket for vacuum modular
units for flexible trackway
DYS-0466-71-04-00-0

Bracket for magnetic
units for flexible trackway
DYS-0466-71-05-00-0

Aluminum track support
for flexible trackway
WSP-0466-71-03-00-0

Vacuum modular unit
MST-0541-10-02-00-0

Magnetic spacing-adjustable unit
ZSP-0523-19-00-00-0

Magnetic pivoting unit
ZSP-0475-85-00-00-0

Steel track support
for flexible trackway
WSP-0466-71-06-00-0

Magnetic narrow
unit with hexagon
PDS-0582-10-00-02-0

Heat-resistant
magnetic unit
ZSP-0475-93-00-00-0

Magnetic unit
ZSP-0475-92-00-00-0

Trackway following guide
arms (set of 2 pcs)
ZST-0466-69-00-00-0



More information about Promotech's Vacuum System configurations and components is available at company website www.promotech.eu



LIZARD | PROGRAMMABLE WELDING TRACTOR

Lizard is a portable, programmable, trackless welding tractor designed to produce consistently high-quality welds.

It can be programmed in continuous or stitch welding modes.

Welder-friendly two-function buttons enable storage and reproduction of up to 40 different welding programs for various joint configurations and multi-pass, multi-layer welds.

Constant, continuous, and repeatable travel speed enables weld bead geometry that is exact to the required specifications, thus reducing costly over welding and decreasing filler metal usage, substantially.

Lizard is capable of producing weave welds by means of an optional pendulum oscillator. The oscillator allows for precise control of weave width, weave speed, and left/right side wall dwell and is particularly useful for vertical welding.

Applications:

- Trailer manufacturing
- Truck tanks
- Oil tanks
- Water storage tanks
- Transformers
- Shipyards
- Any application demanding stitch or a long, continuous fillet weld

42V AC version available



A very important optional feature of LIZARD is oscillation attachment to produce weave welds.

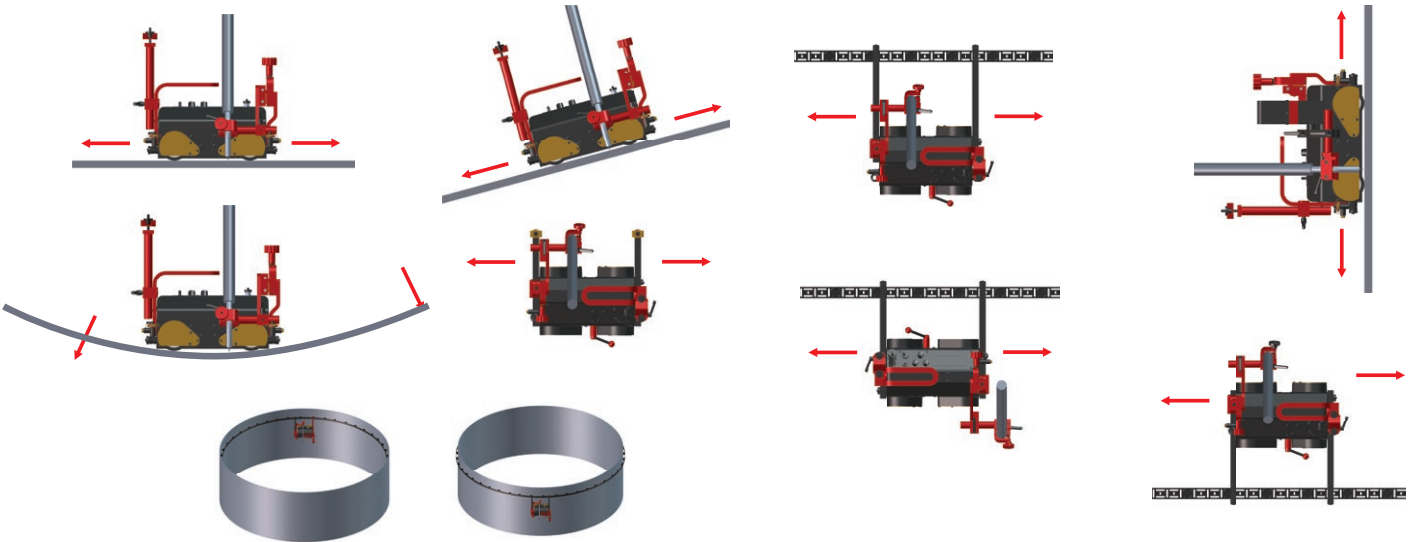
The unit can identify its connection automatically and configure suitable operating modes.

Torch oscillator increases significantly functionality of Lizard welding tractor by allowing it to operate in most out-of-position welding jobs.

TECHNICAL SPECIFICATIONS LIZARD	
Voltage	1- 115-230 V, 50-60 Hz 42 V, 50-60 Hz
Power	25 W
Welding position (according to EN ISO 6947 and AWS/ASME)	PA / 1F / 1G PB / 2F PC / 2G PD / 4F PE / 4G PF / 3F / 3G with optional oscillator PG / 3F / 3G (with optional oscillator)
Programmable variables	tractor speed, weld length, skip, crater fill, backweld, total length
Welding settings storage	up to 40
Menu language	English, French, German, Polish, Portuguese, Russian, Spanish, Turkish
Torch diameter	16-22 mm (0.63-0.87"); up to 35mm (1.38") option
Minimum radius of curved workpiece surface	1500 mm (5 ft)
Minimum workpiece thickness	5 mm (0.2")
Ground clearance	5 mm (0.2")
Horizontal pulling force	220 N
Vertical pulling force	150 N
Cross slide adjustment range	0-35 mm (0-1.38") up-down, left-right
Horizontal speed	0-130 cm/min (0-51 3/16 in/min)
Vertical speed	0-120 cm/min (0-47 1/4 in/min)
Limit switch	at both sides
Weight	14 kg (31 lbs)
Product Code (115-230 V, 50-60 Hz, plug EU)	WOZ-0754-10-20-00-0

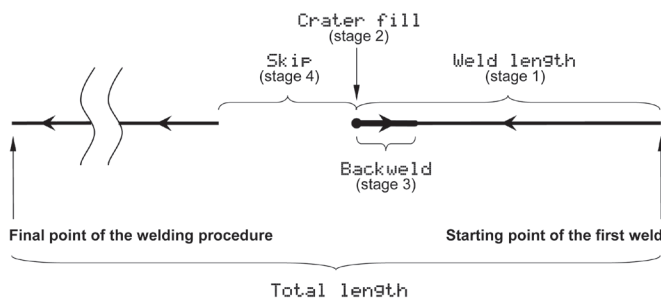
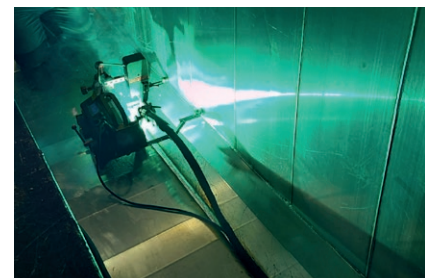
- Programming device up to 40 welding programs
- Dual Arc Ignition
- Min. path convex radius 1500 mm (5 ft)
- Angular oscillation
- Dual torch welding
- Min. path concave radius 1500 mm (5 ft)
- Continuous welding
- Horizontal speed 0-130 cm/min (0-51 3/16 in/min)
- Vertical speed 0-120 cm/min (0-47 1/4 in/min)
- Stitch welding
- Weight 14 kg (31 lbs)

Versatility of applications including out-of-position use



Primary features and benefits:

- Up to 40 complete programs may be stored in non-volatile memory to repeat optimum weld procedures
- Multifunctional LCD and 2-function buttons for programming selected welding patterns and parameters such as weld length, the distance between welds, reverse fill, crater fill time, and others
- The closed-loop speed control system stabilizes travel speed, enabling uniform heat input to produce consistently high-quality welds
- Lizard travels at full speed between stitches, which saves valuable welding time.
- The optional torch oscillator produces weave welds
- 4-wheel drive magnetic traction permits out-of-position use
- Compact, lightweight design with a durable aluminum cast housing
- Convenient Power Supply 115-230 V, 50-60 Hz or 42 V, 50-60 Hz

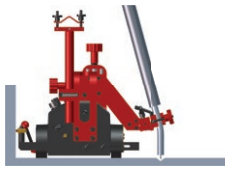
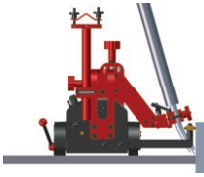


Programmable variables diagram

1. Operator's panel with control knobs and switches
2. Limit switch
3. Adjustable guide arm
4. Quick clamp torch holder
5. Cross slide assembly
6. Cable anchor
7. Main Power Switch (0/I)
8. Weld contact / Arc ignition socket
9. Magnetic adhesion release lever



Standard accessories



Standard guide arms
(set of 2 pcs)
PRW-0754-10-00-00



Dual arc ignition cable of
6.5 m (21 ft)
KBL-0466-17-00-00



Short rod torch holder
with clamp 16-22 mm
UCW-0754-07-00-00



Cable anchor
PDT-0754-12-00-00-0

Optional accessories



Torch clamp 16-22 mm
ZRZ-0752-07-01-00-0



Torch clip 16-22 mm
ZCS-0476-06-01-00-0



Torch clamp 22-35 mm
ZRZ-0466-19-00-00-0



Short Rod Clamp
WLK-0476-20-01-00-0



Short rod torch holder
with clip 16-22 mm
UCW-0476-27-00-00-0



Fall arrester device
URZ-000001



Long rod torch holder
with clamp 16-22 mm
UCW-0752-07-00-00-0



Long rod torch holder
with clip 16-22 mm
UCW-0466-22-00-00-0



Long Rod Clamp
WLK-0466-04-10-00-0



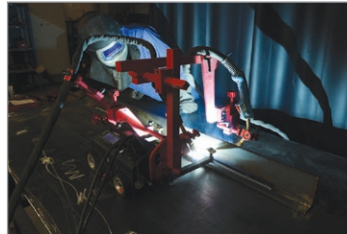
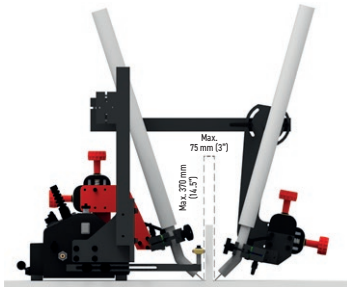
Torch Extension Arm
PRD-0466-43-00-00-0



Extended Cross-Slide
0-76 mm (0-3") up-down,
0-35 mm (0-1.38") left-right
ZSP-0466-46-00-00-1



Dual Torch Mount
PDT-0466-40-00-00-0



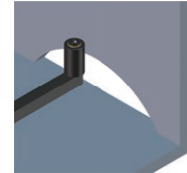
Optional accessories for multi-surface guiding and variety of applications



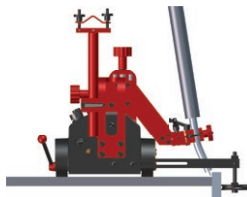
Low Guide Arms (set of 2 pcs)
PRW-0476-54-00-00-1



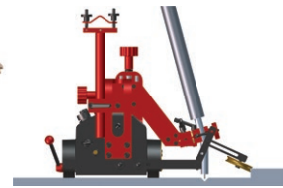
High Guide Arms (set of 2 pcs)
PRW-0476-55-00-00-1



Edge Following Guide Arms (set of 2 pcs)
PRW-0476-21-00-00-1

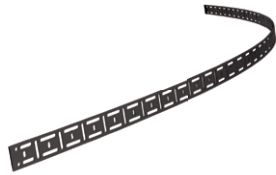


Adjustable Guide Arms (set of 2 pcs)
PRW-0476-22-00-00-1





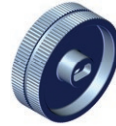
Track Following Guide Arms (set of 2 pcs)
PRW-0476-50-01-00-1



Flexible Track 185cm (6ft) 1 pc
PRW-0466-50-01-01-0



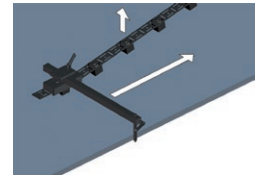
Magnetic block for flexible track box of 10 pcs
BLO-0466-68-00-00-0



Stainless steel driving wheel
KOL-0476-57-00-00-0



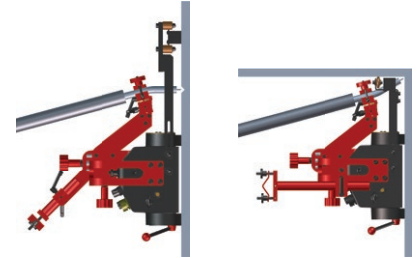
Guide adjustment tool to position the track parallel to the edge
UST-0466-53-00-00-0



Magnet guide arms (set of 2 pcs)
PRW-0476-52-00-00-1



Display shield
OSL-0476-23-00-00-0



Optional Pendulum Oscillator

The oscillator features precise control of weave width, weave speed and dwell times.



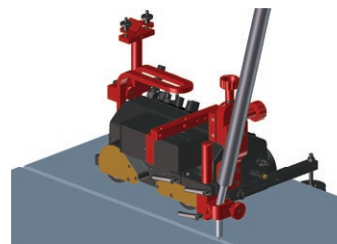
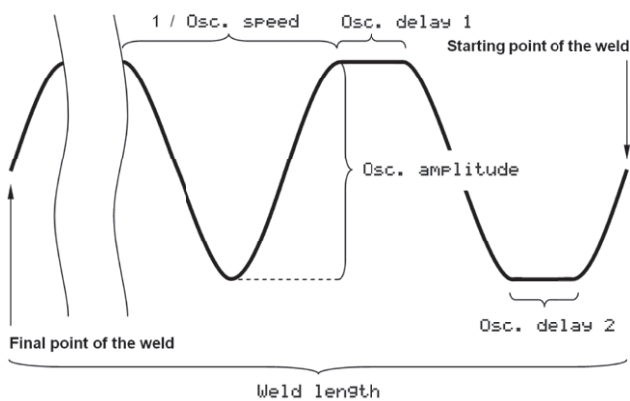
Oscillator
ZSP-0477-10-00-00-0



Torch Holder Lower Rod Clamp Assembly
UCW-0476-06-00-00-0



Oscillator settings diagram



Oscillation type	pendulum (0°-11°)
Oscillation amplitude	1-30mm (1-100%) at r=150 mm (5.9")
Oscillation speed at oscillation amplitude of 10 mm (25/64") and zero dwell time on ends	7-164 cycles/min (1-100%)
Oscillation delay time	0-5 s (at external points)
Power	12 W
Weight	2.6 kg (5.7 lbs)



Fillet Welding with oscillator





RAIL TUG | TRACK WELDING AND CUTTING TRACTOR

The Rail Tug is a digitally controlled tractor designed for the mechanization of welding and thermal cutting processes. Featuring a rack and pinion drive system with electronic speed control, Rail Tug creates weld bead geometry which is exact to your specifications, reducing costly over welding and decreasing filler metal usage.

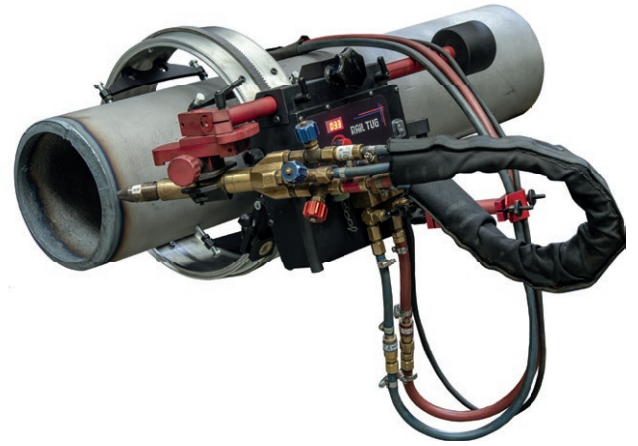
It can be used with semi-flexible tracks for plate and tank work with a minimum radius of 5 m (16 ft) or adapted to bent ring rail for pipe and tube applications.

Hi-Flex tracks are suitable for variety of circumferential and irregular surface applications down to minimum radius of 750 mm (30")

Standard ring tracks are available for tube diameters from 200 mm (8") up to 3000 mm (10 ft).

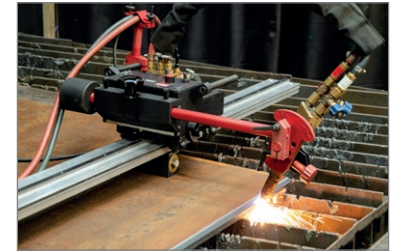
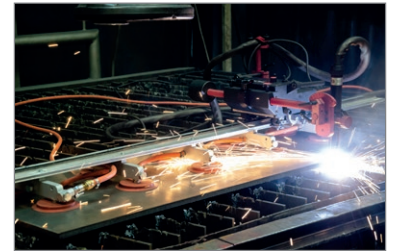
Using a vacuum system allows the tracks to be clamped to non-ferrous surfaces (stainless steel, aluminum etc.)

The Rail Tug economically meets a broad array of welding and cutting applications on flat or curved plate, tube and pipe.



Applications:

- Trailer manufacturing
- Truck tanks
- Oil tanks
- Water storage tanks
- Pressure vessels
- Bridge girders
- Structural steel
- Structural towers
- Panel welding
- Transformers
- Shipyards
- Any application demanding long continuous welds

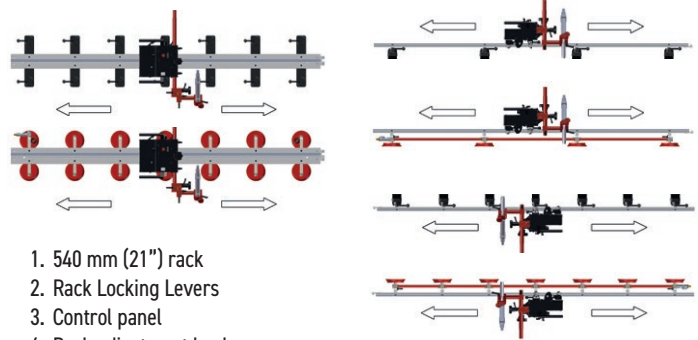
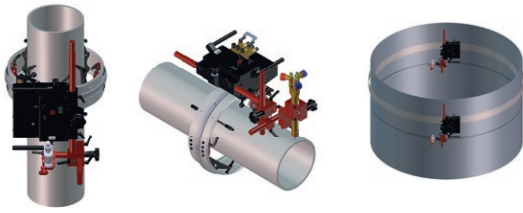


RAIL TUG TECHNICAL SPECIFICATION

Voltage	1~ 115-230 V, 50-60 Hz	
Power	66 W	
Welding position (according to EN ISO 6947 and AWS/ASME)	PA / 1F / 1G PB / 2F PC / 2G PD / 4F PE / 4G PG / 3F (contact your dealer)	
Fixing on pipes and round workpieces	Ring tracks	from 200 mm (8") OD up to 3 m (10ft) OD
	Hi-flex tracks	Minimum curvature radius of 750 mm (30")
	Semi-flexible track	Minimum curvature radius of 5 m (16 ft)
Torch type	MIG/MAG, SAW, Plasma, Oxy-fuel	
Torch diameter	MIG/MAG	16-22 mm (0.63-0.87")
	SAW, Plasma	
	Oxy-fuel	up to 35 mm (1.38") option
Horizontal pulling force	300 N	
Vertical pulling force	200 N	
Horizontal speed	10-200 cm/min (4-80 in/min)	
Vertical speed	10-200 cm/min (4-80 in/min)	
Weight	10 kg (22 lbs)	
Product Code (115-230 V, 50-60 Hz, plug EU)	WOZ-0570-10-20-00-0	

- Continuous welding
- Horizontal speed 10-200 cm/min
- Vertical speed 10-200 cm/min
- Ring tracks from 200 mm (8") OD up to 3 m (10 ft) OD
- Hi Flex Track min OD 1500 mm (59")
- Min. path convex radius for semi-flexible tracks is 5 m (16 ft)

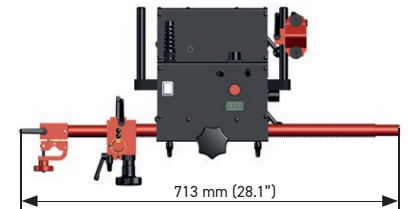
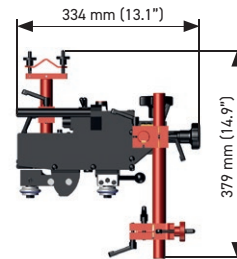
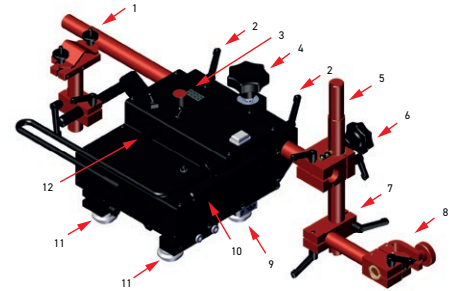
Rail Tug can work in various welding positions on both ferromagnetic and non-ferromagnetic materials by using rack and pinion drive and various tracks equipped with magnetic or vacuum units.



Primary features and benefits

- Compact, lightweight design
- Closed-loop speed control system based on electric motor with encoder – ensures increased accuracy of speed
- Rack and pinion drive
- Consistent heat input reduces distortion
- Reduces wasted filler metal – eliminates over welding
- Digital LED display for presetting of travel speed
- Automatic arc on/off initiates welding and travel simultaneously
- Oxy-fuel and plasma cutting possible with optional accessories
- Suitable for variety of circumferential and irregular surface applications down to minimum radius of 100 mm (4")
 - Ring tracks on diameters from 200 mm (8") OD up to 3 m OD
 - Hi-Flex tracks on diameters from 1500 mm (59") OD upwards
 - Semi-flexible tracks can be bent to minimum radius of 5 m without permanent deformation
- Quick-clamping torch holder mechanism for different types of torches with diameters of 16–22 mm (0.63–0.87"); up to 35 mm (1.38") option
- Precise torch adjustment with screw drive cross slide
- Convenient external 85-250 V power supply
- Improves working environment – removes operator from heat and fumes



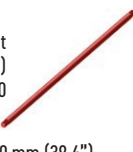










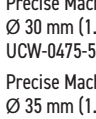

1. 540 mm (21") rack
2. Rack Locking Levers
3. Control panel
4. Rack adjustment knob
5. 300 mm (12") rack with 180 mm (7") adjustment
6. Rack holder
7. Clamping block with levers
8. Short rod torch holder with fits-all clamp
9. Guiding Roller
10. Carrying handle
11. Adjustable Roller
12. Arc ignition socket



Standard accessories:

 Power cord 3 m (9,7 ft) PWD-0466-18-00-00-0 (230 V CEE) PWD-0466-16-00-00-0 (115 V USA) PWD-0466-23-00-00-0 (230 V UK)	 Dual arc ignition cable 6.5 m (21 ft) KBL-0466-17-00-00-0	 540 mm (21") Geared Rack RAM-0525-07-00-00-0	 Cable anchor UCW-0523-05-01-00-0	 Rackholder ZSP-0475-62-00-00-0	 300 mm (12") rack with 180 mm (7") adjustment RAM-0523-17-00-00-0	 Clamping block with levers KST-0525-11-00-00-0	 Short rod torch holder with fits-all clamp UCW-0476-20-00-00-0
--	--	--	--	--	---	--	--

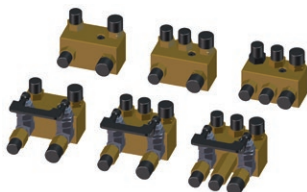
Optional accessories:

 Gear Rack Adjustment Tool PKT-0341-13-00-00-0	 700 mm (25.6") Geared Rack RAM-0475-07-03-00-0	 1000 mm (39.4") Geared Rack RAM-0475-23-00-00-0	 Counterweight 1.3 kg (2.9 lbs) PWG-0475-09-00-00-0	 Large Counterweight 2,6 kg (5,7lbs) PWG-0475-10-00-00-0	 16-22 mm Torch Clip ZCS-0476-06-01-00-0	 22-35 mm Torch Clamp ZRZ-0466-19-00-00-0	 203 mm (8") rod KLM-0236-00-16-00-0	 Standard Torch Holder 28–35 mm (1.10–1.38") ZCS-0475-28-10-00-0	 Standard Torch Holder with angle adjustment UCW-0475-28-00-00-0
 Precise Torch Holder with angle and height adjustment UCW-0475-08-00-00-0	 Machine Barrel Torch Holder Ø 30 mm (1.18") UCW-0475-61-00-00-0	 Machine Barrel Torch Holder Ø 35 mm (1.38") UCW-0475-29-00-00-1	 Precise Machine Torch Holder Ø 30 mm (1.18") UCW-0475-59-00-00-0	 Precise Machine Torch Holder Ø 35 mm (1.38") UCW-0475-42-00-00-1					

Standard shipping set:

- Rail Tug tractor
- Cardboard box
- 300 mm (12") rack with 180 mm (7") adjustment
- Rack holder
- Clamping block with levers
- Short rod torch holder with clamp
- Cable anchor
- 6 mm hex wrench
- 6.5 m (21 ft) arc ignition cable
- 3 m (10 ft) power cord
- Operator's Manual

Gas Manifold type	Metric	Imperial
Manifold 2x2	RZD-0475-64-00-00-0	RZD-0475-68-00-00-0
Manifold 2x3	RZD-0475-63-00-00-0	RZD-0475-67-00-00-0
Manifold 3/3	RZD-0475-74-00-00-0	RZD-0475-73-00-00-0
Manifold 2x2 with cut-off valve	RZD-0475-65-00-00-0	RZD-0475-70-00-00-0
Manifold 2/3 with cut-off valve	RZD-0475-66-00-00-0	RZD-0475-69-00-00-0
Manifold 3/3 with cut-off valve	RZD-0475-72-00-00-0	RZD-0475-71-00-00-0





RAIL BULL | TRACK WELDING TRACTOR WITH OSCILLATOR

The Rail Bull is a track welding tractor designed to produce butt and fillet welds with or without oscillation.

The tractor can work in PA (flat), PB (horizontal vertical), PC (horizontal), PD (overhead horizontal-vertical), PE (overhead), PF (vertical-up) and PG (vertical-down) welding positions.

Applications:

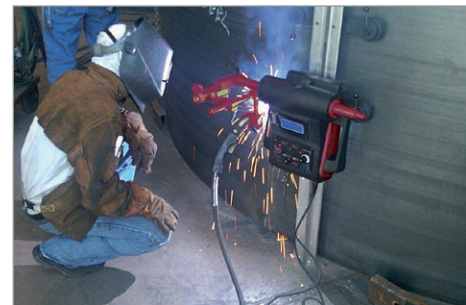
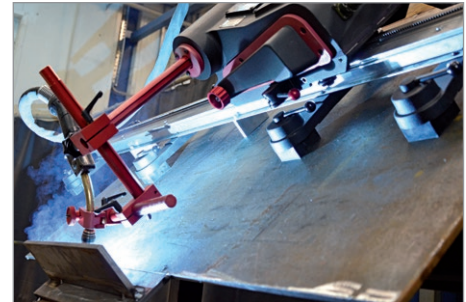
- Trailer manufacturing
- Truck tanks
- Oil tanks
- Water storage tanks
- Pressure vessels
- Vessel overlay/Hard facing
- Bridge girders
- Structural steel
- Structural towers
- Panel welding
- Transformers
- Shipyards
- Any application demanding long, continuous welds

42V AC version available

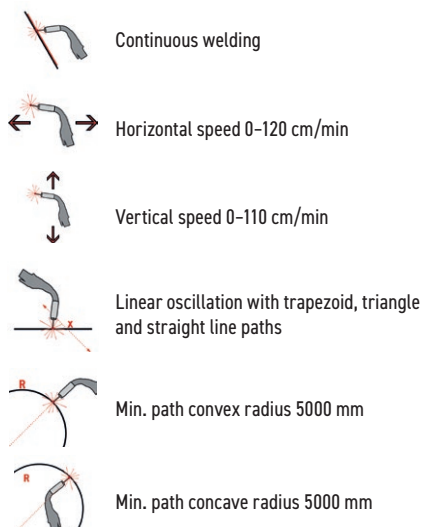


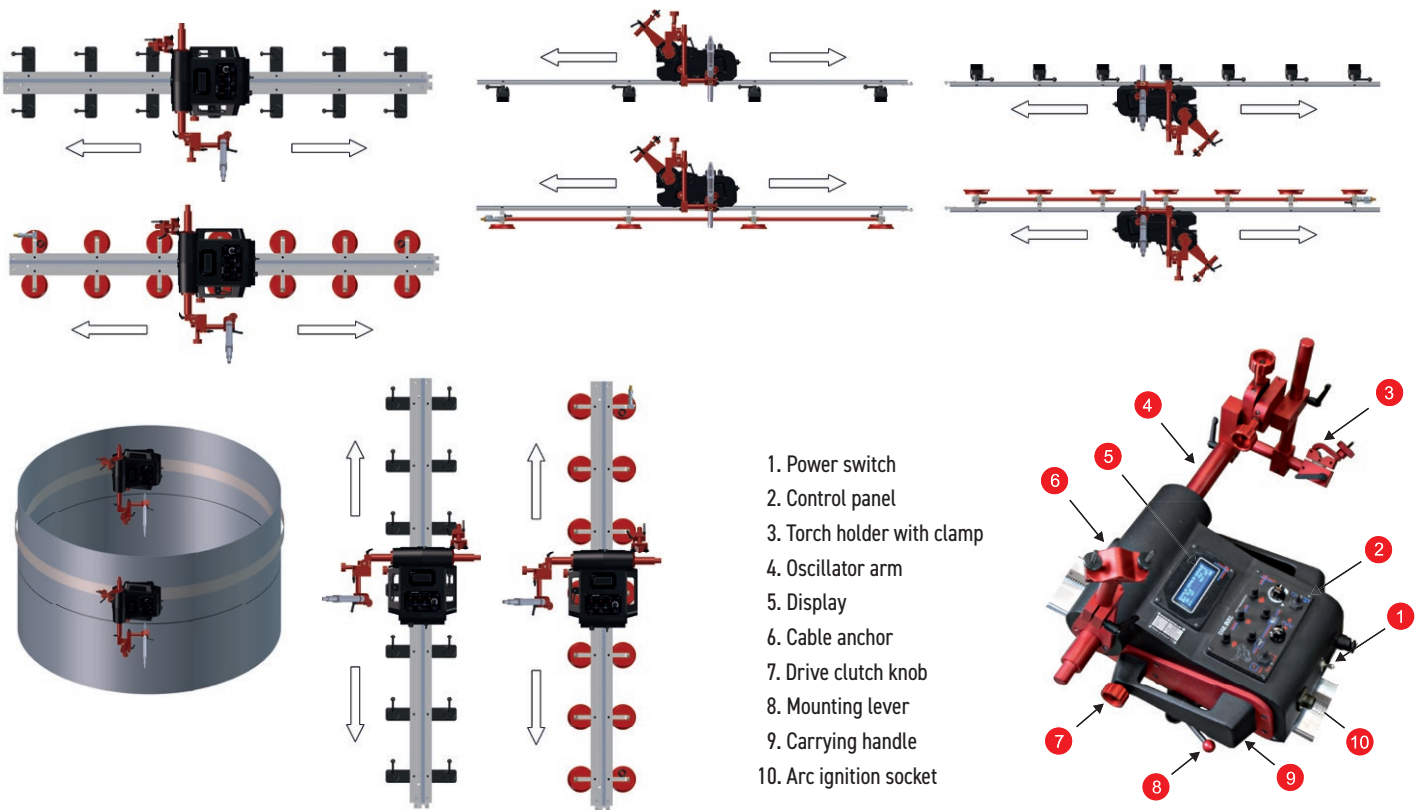
Rail Bull moves along either rigid or semi-flexible track on both ferromagnetic and non-ferromagnetic materials thanks to rack and pinion drive and tracks fixed to flat or curved surfaces by means of various magnetic or vacuum units.

The minimum curvature radius required for semi-flexible track is 5 m (16 ft).



TECHNICAL SPECIFICATIONS RAIL BULL	
Voltage	1~ 100-240V, 50-60 Hz 42 V, 50-60 Hz
Power	100 W
Welding position (according to EN ISO 6947 and AWS/ASME)	PA / 1F / 1G PB / 2F PC / 2G PD / 4F PE / 4G PF / 3G PG / 3G
Torch diameter	16-22 mm (0.63-0.87"); up to 35mm (1.38") option
Minimum radius of curved workpiece surface	5000 mm (16 ft)
Minimum workpiece thickness	5 mm (0.2")
Horizontal pulling force	350 N
Vertical pulling force	150 N
Cross slide adjustment range	0-35 mm (0-1.38") up-down, left-right
Horizontal speed	0-120 cm/min (0-47.2 in/min)
Vertical speed	0-110 cm/min (0-43.3 in/min)
Weight	16.5 kg (36.4 lbs)
Welding settings storage	1 (last used)
Oscillation type	linear (0 - 100 mm)
Oscillation (weaving) pattern	trapezoid, straight line
Oscillation width	0-50 mm (0-1.9")
Oscillation speed	0-1500 mm/min (0-59 in/min)
Oscillation delay time	0-5 s (at external and central points)
Product Code (115-230 V, 50-60 Hz, plug EU)	WOZ-0482-10-20-01-0
Product Code (115-230 V, 50-60 Hz, plug UK)	WOZ-0482-10-10-01-0
Product Code (42 V, 50-60 Hz)	WOZ-0624-10-04-00-0





1. Power switch
2. Control panel
3. Torch holder with clamp
4. Oscillator arm
5. Display
6. Cable anchor
7. Drive clutch knob
8. Mounting lever
9. Carrying handle
10. Arc ignition socket

Primary features and benefits:

- Compact, lightweight design with durable aluminum cast housing
- Convenient Power Supply 115-230 V, 50-60 Hz or 42 V, 50-60 Hz
- Quick clamping torch holder mechanism for different types of MIG/MAG torches with diameters of 16-22 mm (0.63-0.87"); up to 35 mm (1.38") option
- Precise torch adjustment with screw drive cross slide
- Ready to work in both vertical and horizontal positions
- Multifunctional LCD display (process parameters & warnings)
- Consistent heat input reduces distortion
- Reduce wasted filler metal - eliminates over welding
- Automatic arc on/off initiates welding and travel, simultaneously
- Closed loop position control system based on electrical motor with encoder, ensures increased accuracy of speed and positioning
- Improves working environment - removes operator from heat and fumes
- Linear torch oscillator to produce weave welds
- Menu in English (other languages on request)
- Rack and pinion drive
- Continuous welding
- Rigid rail track system

Weld paths:



The Rail Bull welding tractor is supplied in a metal box including:

- welding tractor
- cardboard box
- cross slide assembly
- short rod torch holder with clamp
- cable anchor
- power cord 3 m (10 ft)
- arc ignition cable of 6.5 m (21 ft)
- 3 mm hex wrench
- 4 mm hex wrench
- operator's manual

I. Trapezoid

The tractor travels continuously even during dwell mode. Weld path is determined by weave speed and dwell time at center and on sides of the weld path.

II. Straight

The tractor travels continuously while oscillation is switched-off.

Standard accessories:



Power Cord 3 m (10 ft)



Dual Arc Ignition Cable of 6.5 m (21 ft)
KBL-0466-17-00-00



Holder Short Rod
Clamp Assembly
UCW-0476-20-00-00-0 Torch



Cable Anchor
UCW-0482-17-00-00-0

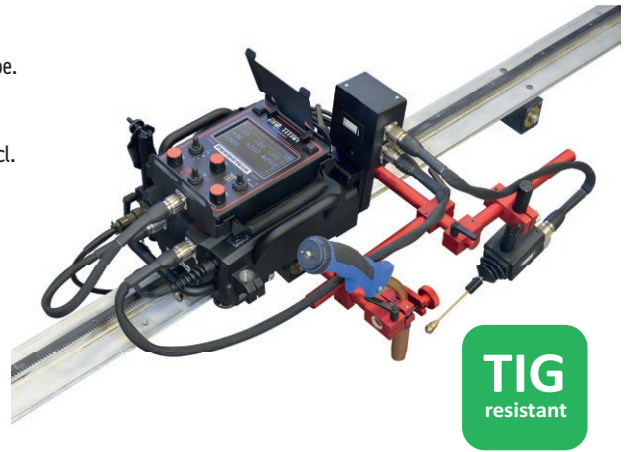


RAIL TITAN | MODULAR TIG-MIG-MAG WELDING AND CUTTING RAIL TRACTOR

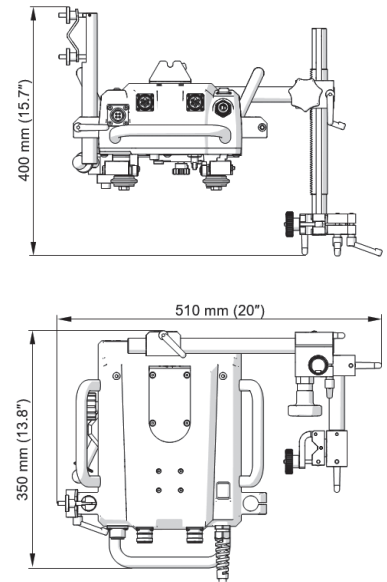
Rail Titan is fully modular mechanized tractor that can be custom configured for TIG-MIG-MAG welding, oxy-fuel or plasma cutting and gouging applications on flat or curved plate, tube and pipe. Linear torch oscillator produces straight, triangle, trapezoid and square weld paths. Rail Titan can travel on hi-flex, semi-flexible, rigid or ring tracks that can be clamped to ferrous materials with magnetic units and to non-ferrous materials by means of vacuum track system incl. vacuum pump and vacuum units.

Primary features and benefits:

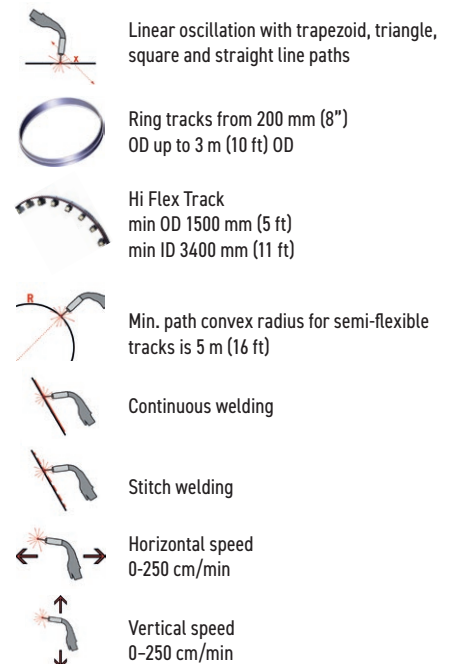
- Suitable for TIG welding (HF resistant)
- Robust design with die-cast aluminum housing
- Ergonomic remote control pendant with simple and easy to find control knobs makes adjustments possible without lifting of the operators welding hood
- Programmable path of stitch welds
- Suitable for variety of circumferential and irregular surface applications down to min. radius of 100 mm (4")
 - Ring tracks on diameters from 200 mm (8") OD up to 3 m (10 ft) OD
 - Hi-Flex tracks on diameters from 1500 mm (59") OD upwards
 - Semi-flexible tracks can be flexed to minimum radius of 5 m (16 ft) without permanent deformation
- Seam tracking enables active compensation of torch position vertically and horizontally with and without oscillation
- New type of signal sockets/plugs feature increased HF immunity and improved grip for easier tightening & loosening
- Suitable for all welding positions on both ferromagnetic and non-ferromagnetic materials thanks to rack and pinion drive and various tracks equipped with magnetic or vacuum units
- Rail Titan produces consistent high quality welds and cuts in a fraction of the time required by manual operations
- Wide input voltage range: 100-240V, 50-60Hz 1ph (single phase)



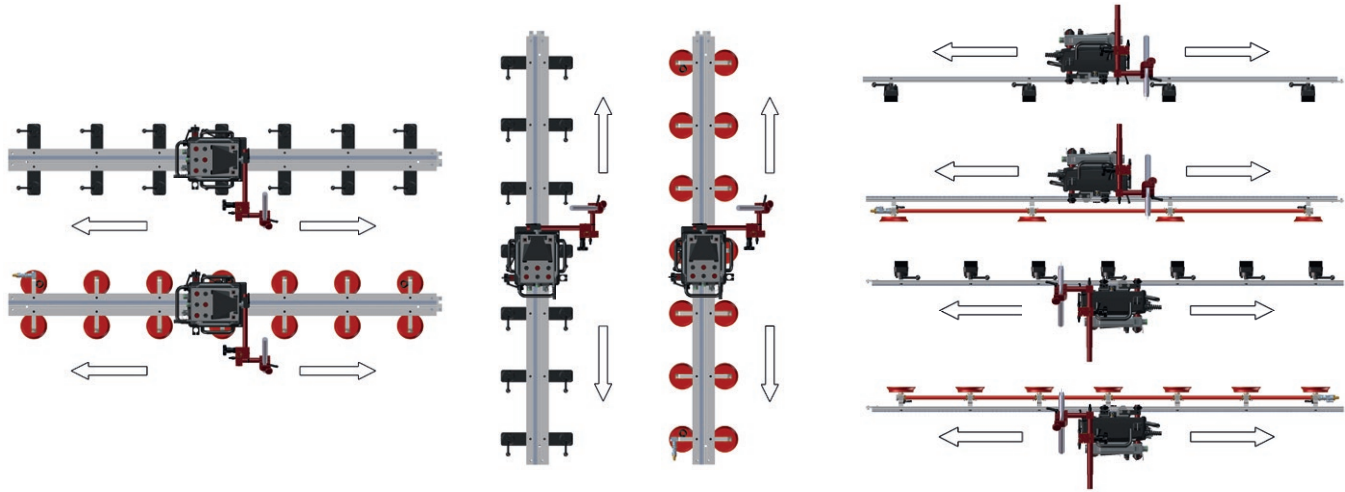
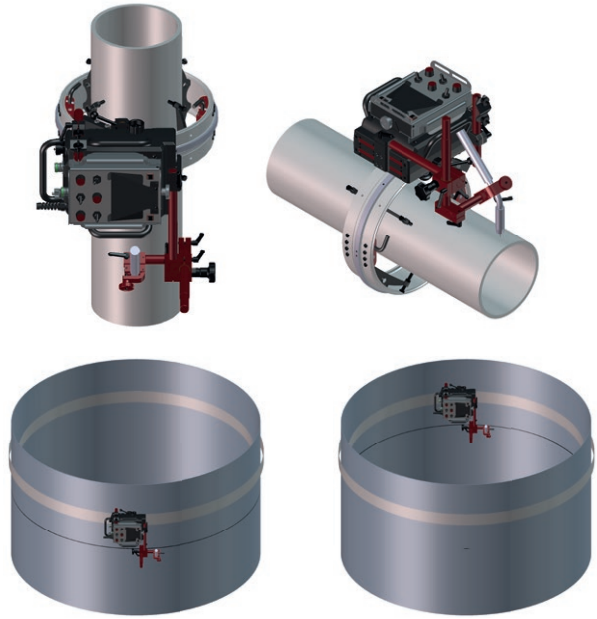
Dimensions:



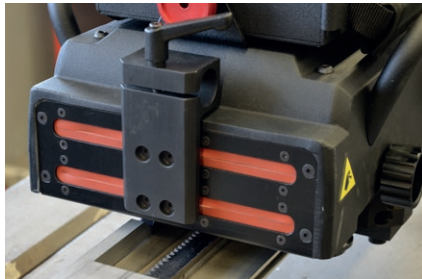
RAIL TITAN TECHNICAL SPECIFICATION		
Voltage	1~100-240V, 50-60Hz	
Power	120 W	
Welding position (according to EN ISO 6947 and AWS/ASME)	Horizontal	PA/1F/1G PB/2F PC/2G PD/4F PE/4G
	Vertical	PF/3G PG/3F (contact your dealer) PG/3G
Fixing on pipes and round workpieces	Ring tracks (OD)	200 mm (8") - 3 m (10 ft)
	Hi-flex tracks (OD)	Minimum 1.5 m (5 ft)
	Hi-flex tracks (ID)	Minimum 3.4 m (11 ft)
	Semi-flex tracks (OD)	Minimum 10 m (32 ft)
Torch type	MIG/MAG, TIG, oxy-fuel, plasma	
MIG/MAG torch diameter	16-22 mm (0.63-0.87")	
Minimum workpiece thickness for magnetic clamping	5 mm (0.2")	
Horizontal pulling force	400 N	
Vertical pulling force	315 N	
Horizontal speed	0-250 cm/min (0-98 in/min)	
Vertical speed	0-250 cm/min (0-98 in/min)	
Oscillation type	Linear	
Weld path	Straight, triangle, trapezoid, square	
Oscillation width	0.1-11.8 cm (0.04-4.5")	
Oscillation speed	10-200 cm/min (5-78 in/min)	
Oscillation dwell time at center and on ends	0-5 s	
Maximum oscillator pulling force	100 N	
Weight (incl. standard accessories)	13 kg (29 lbs)	
Product Code (115-230 V, 50-60 Hz, plug EU)	WOZ-0654-10-20-00-0	



Rail Titan can work in all welding positions on both ferromagnetic and non-ferromagnetic materials by using rack and pinion drive and various tracks equipped with magnetic or vacuum units.



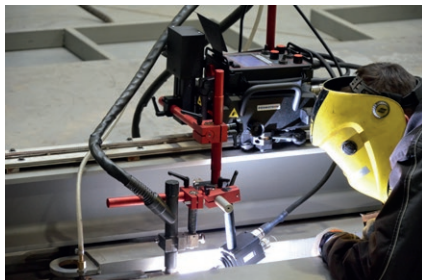
Single lever with lock to position Rail Titan to track



Silicone covers protect against dirt and spatter



New type of signal sockets and plugs

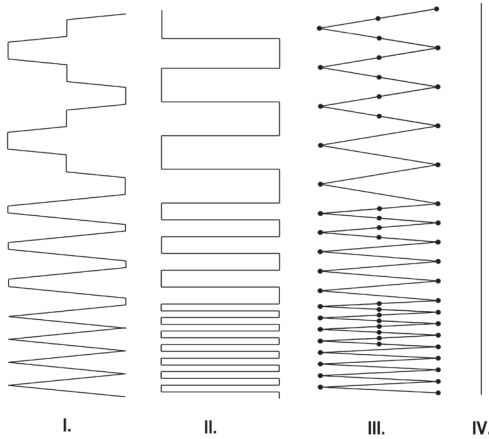


TIG welding of titanium plate

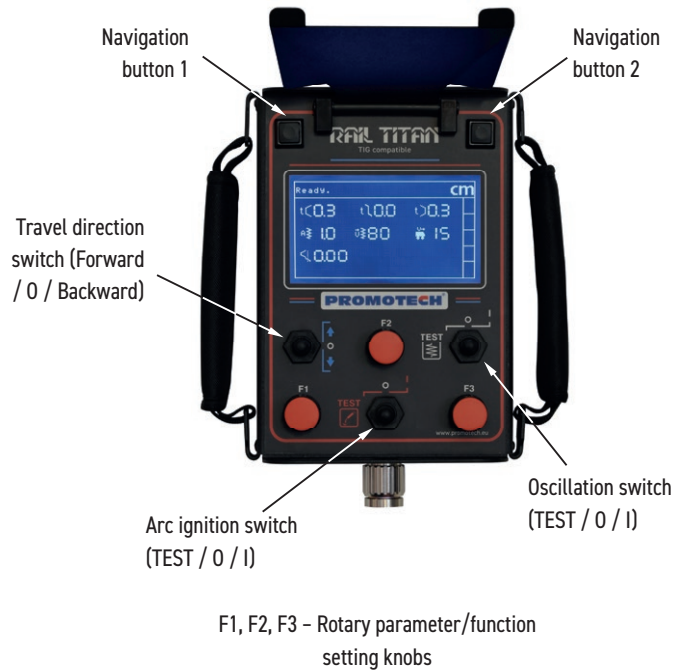


Seam tracking works with and without oscillation

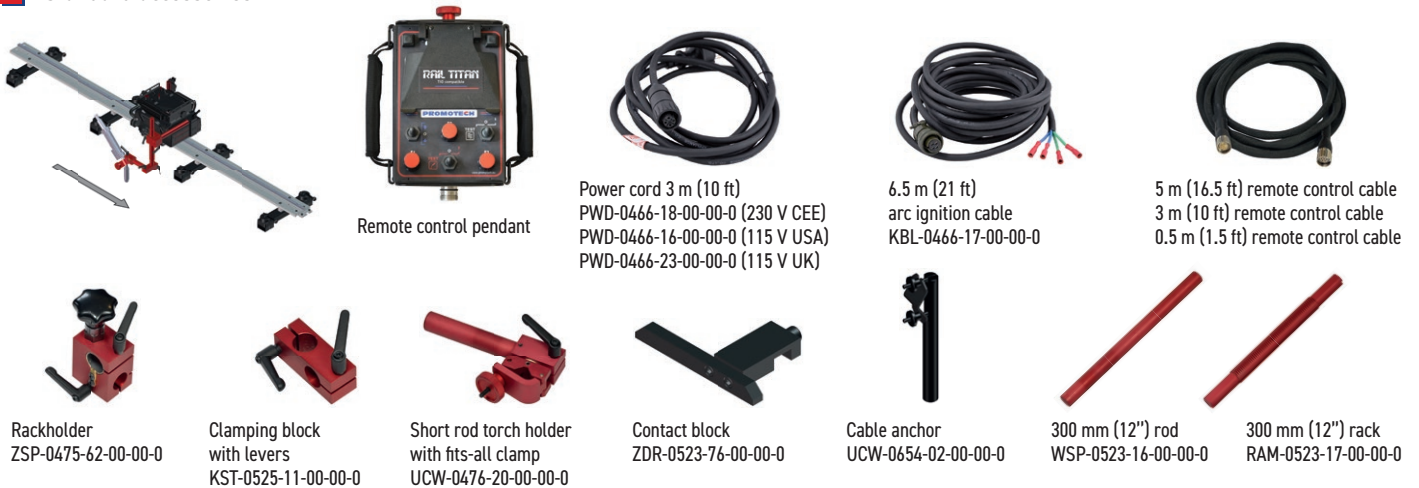
Weld paths



- I. Trapezoid The tractor travels continuously even during dwell mode. Weld path is determined by weave speed and dwell time at center and on sides of the weld path.
- II. Square The tractor travels only during dwell and stops during oscillator cross travel. Only dwell time determines the weld path, and weave speed has no influence.
- III. Triangle The tractor travels only during weaving. Both the tractor and oscillation stop during dwell mode.
- IV. Straight The tractor travels continuously while oscillation is switched-off.

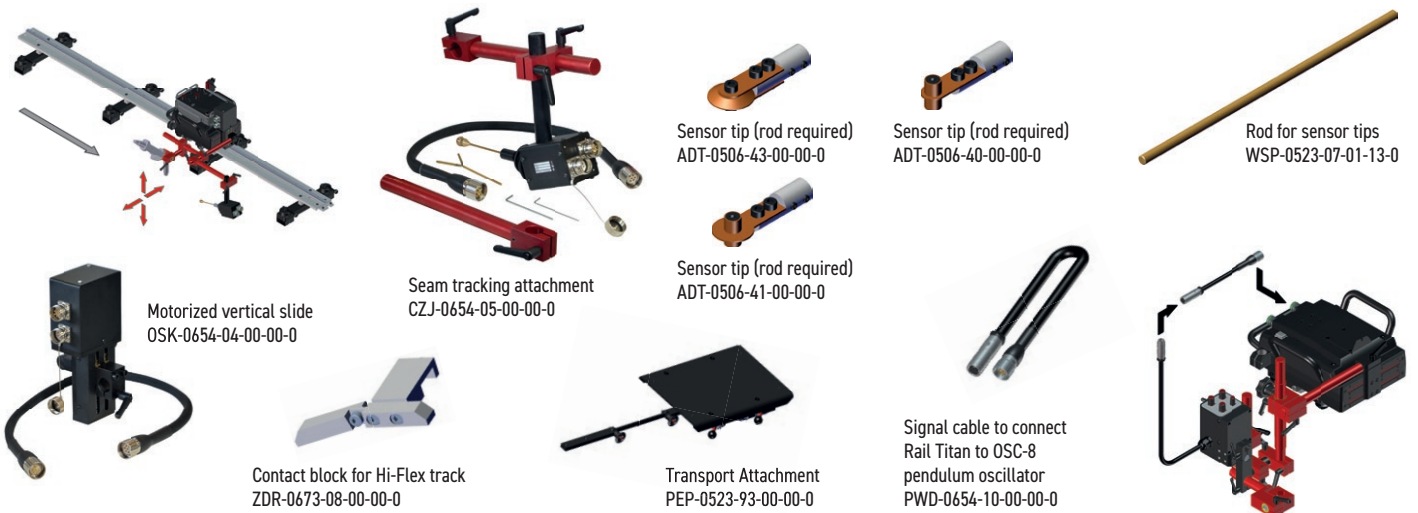


Standard accessories



Optional equipment

Configuration with seam tracking horizontally and vertically requires an optional seam tracking attachment and a motorized vertical slide



Standard shipping set:

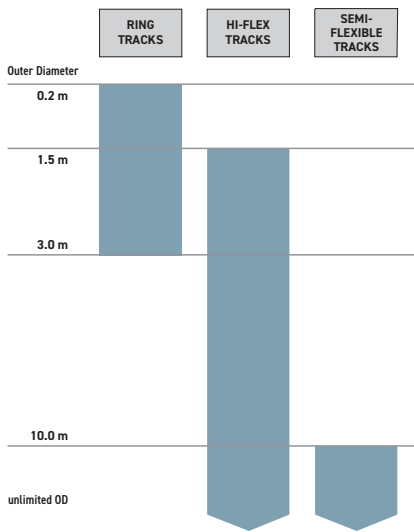
- Rail Titan tractor
- Plastic box
- Remote control pendant
- 5 m (16.5 ft) remote control cable
- 3 m (10 ft) remote control cable
- 0.5 m (1.5 ft) remote control cable
- Power cord
- 6.5 m (21 ft) arc ignition cable
- 300 mm (12") rod
- 300 mm (12") rack with 180 mm (7") adjustment
- Rack holder
- Clamping block with levers
- Short rod torch holder with fits-all clamp
- Cable anchor
- Contact block
- 6 mm hex wrench
- Operator's manual

Applications:

- Trailer manufacturing
- Truck tanks
- Oil tanks
- Water storage tanks
- Pressure vessels
- Vessel overlay / hardfacing
- Bridge girders
- Structural steel
- Structural towers
- Panel welding
- Transformers
- Shipyards
- Any application demanding long continuous welds

Shipping weight: 23 kg. Shipping dimensions (W x L x H): 515 mm x 830 mm x 340 mm

Promotech offers a wide range of tracks suitable for variety of circumferential and irregular surface applications down to min. radius of 100 mm (4")

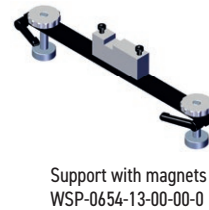
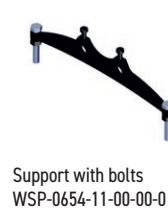
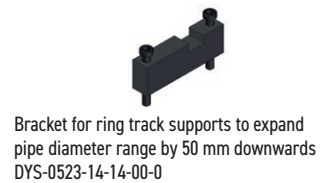


Ring tracks suitable for Rail Titan and Rail Tug

For circumferential applications from 200 mm OD up to 3000 mm OD (from 8" to 10 ft.)

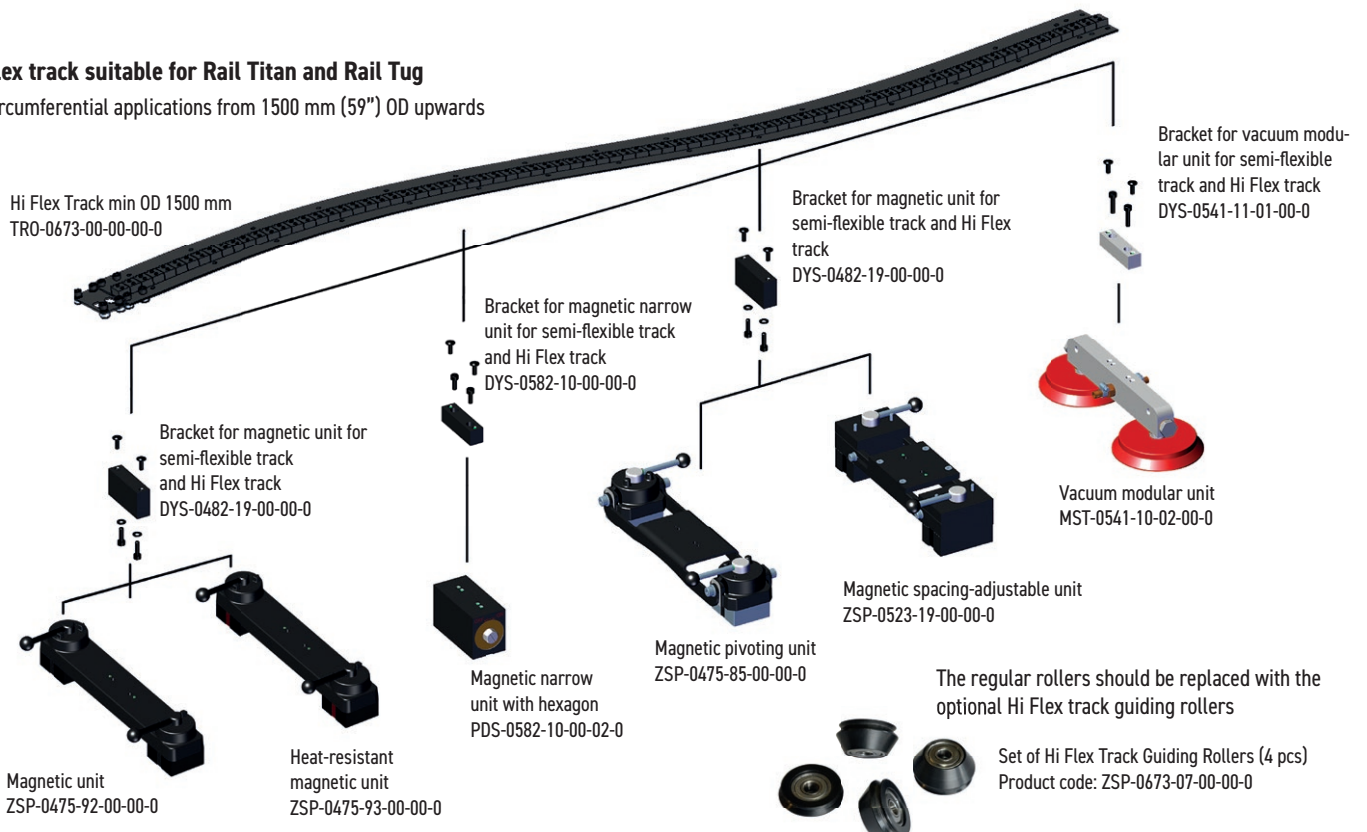


Ring tracks can be equipped with various supports depending on the customer's needs.



Hi-Flex track suitable for Rail Titan and Rail Tug

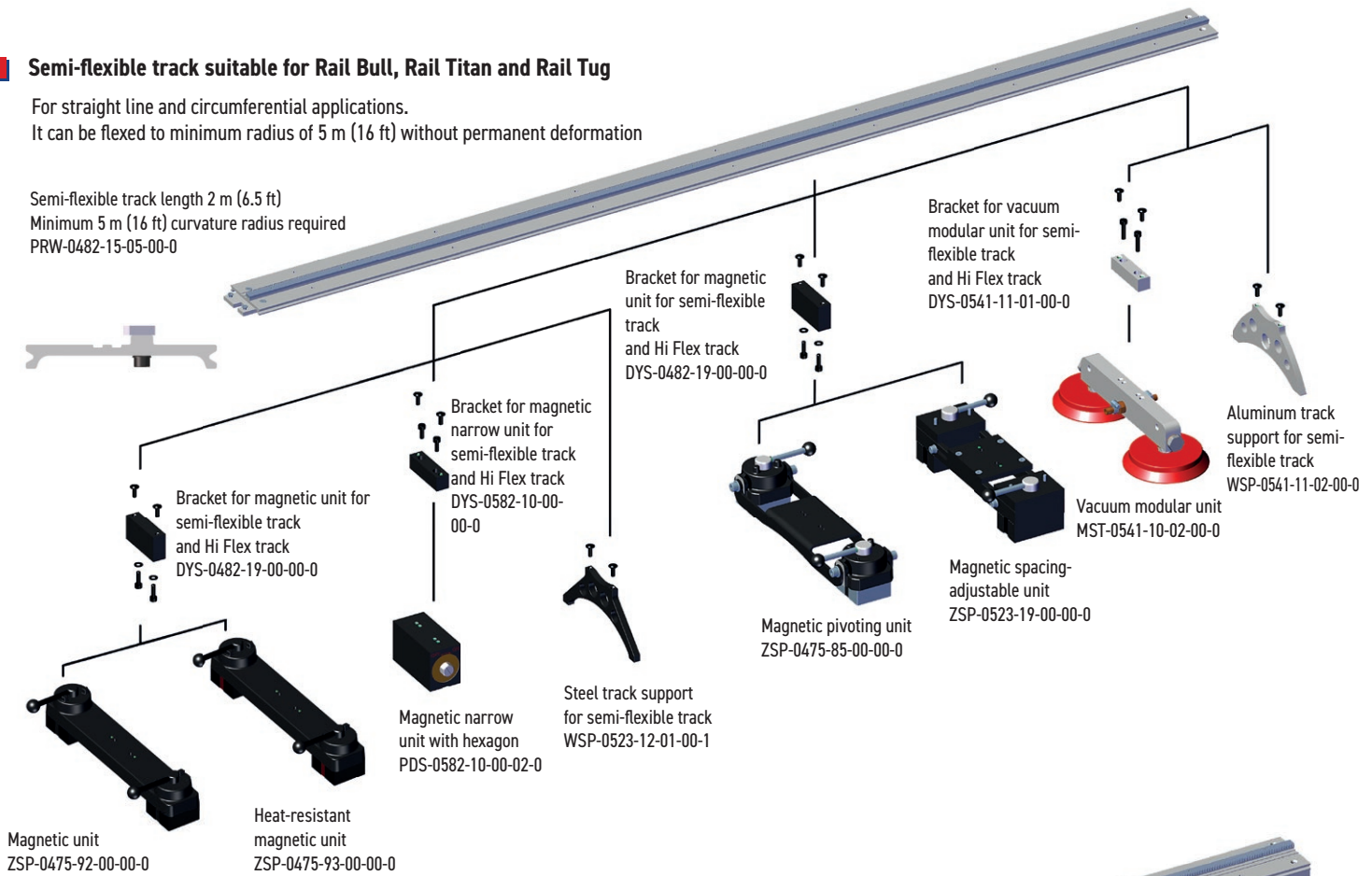
For circumferential applications from 1500 mm (59") OD upwards



Semi-flexible track suitable for Rail Bull, Rail Titan and Rail Tug

For straight line and circumferential applications.
It can be flexed to minimum radius of 5 m (16 ft) without permanent deformation

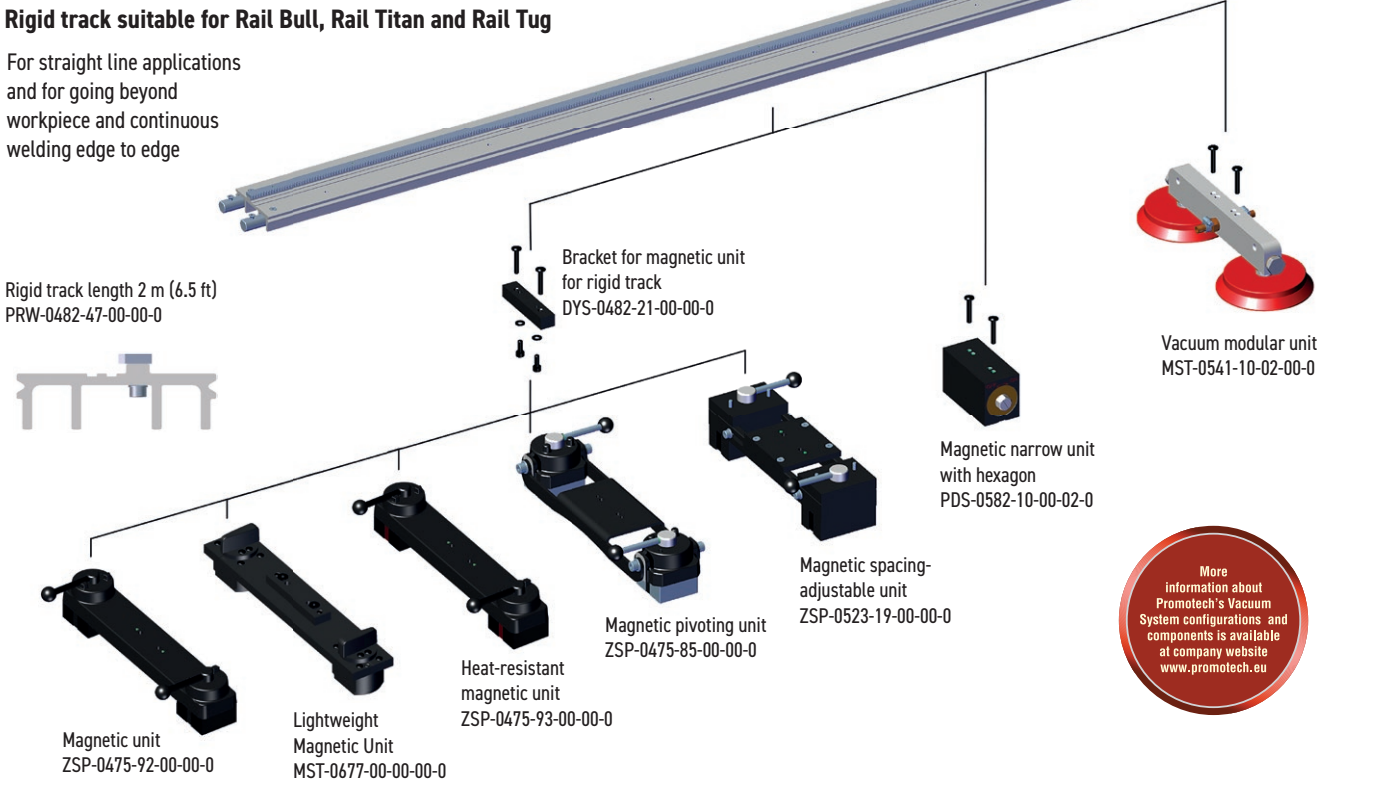
Semi-flexible track length 2 m (6.5 ft)
Minimum 5 m (16 ft) curvature radius required
PRW-0482-15-05-00-0



Rigid track suitable for Rail Bull, Rail Titan and Rail Tug

For straight line applications
and for going beyond
workpiece and continuous
welding edge to edge

Rigid track length 2 m (6.5 ft)
PRW-0482-47-00-00-0



More information about Promotech's Vacuum System configurations and components is available at company website www.promotech.eu

Optional accessories for variety of applications:



Gear Rack Adjustment Tool PKT-0341-13-00-00-0
16-22mm Torch Clip ZCS-0476-06-01-00-0
22-35mm Torch Clamp ZRZ-0466-19-00-00-0
Transport Attachment PEP-0482-18-00-00-0

VACUUM TRACK SYSTEM



Promotech's vacuum fixing system provides firm grip of rail tracks on both ferromagnetic and non-ferromagnetic materials.

Lightweight and modular design enables easy adjustment and fitting of the system to specific needs depending on welding or cutting applications and working positions (e.g. flat, horizontal or vertical).

Vacuum fixing system can be applied to both rigid and semi-flexible tracks to enable usage on surface with a radius of more than 5 m (16 ft).

Features

- back up reservoir for added safety in case of a power failure; back up vacuum offers additional time to safely secure a welding tractor and tracks; it also greatly reduces installation time of the whole system
- maximum plate temperature up to +320°C (608°F)
- only 100 mm (4") minimal distance from heat source to vacuum pads

Applications

- welding and cutting of non-ferromagnetic materials (aluminum or stainless steel constructions)
- welding and cutting of thin or coated ferromagnetic materials when magnetic adhesion may be insufficient

Technical specification

Promotech's system consists of a vacuum pump that generates vacuum and of vacuum units that fix the semi-flexible or rigid track to the surface.

A single pump provides gauge pressure sufficient for up to 21 vacuum units.

A single vacuum unit provides suction power of 1400 N (at gauge pressure of -0.7 bar / -10 psig).

The permitted load is up to 30 kg (66 lbs) - welding/cutting tractor with accessories.

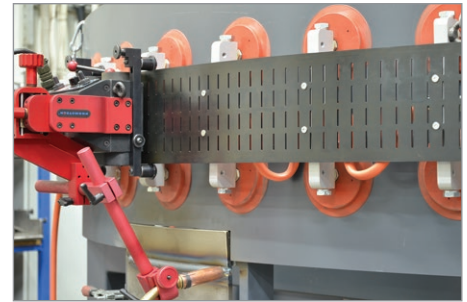
Semi-flexible track can be fixed on flat or curved surfaces with a radius of at least 5 meters (16 ft).

An optional manifold can separately connect vacuum units of up to four rails, what allows rail leapfrogging during operation.

Temperature of material on which vacuum pads are used cannot exceed +320°C (608°F).

Heat source must be kept at least 100 mm (4") away from vacuum pads.

Safety eye bolts are provided to suspend vacuum rail tracks and protect them against accidental fall.



VACUUM TRACK SYSTEM PARAMETERS				
Maximum number of vacuum units per vacuum pump		21		
Minimum curvature radius of semi-flexible track		5 m (16 ft)		
Vacuum unit holding force		1400 N (at gauge pressure of -0.7 bar / -10 psig)		
Working positions		flat, horizontal, vertical		
Maximum permitted track load		30 kg (66 lbs)		
Minimum number of vacuum units	Track type	Horizontal position	Wall position	Curve
	Hi-Flex Track	8	8	8
	Semi-Flex Track	4	7	7
	Rigid Track	4	7	-
Permitted ambient temperature near vacuum units		from -20°C to 200°C (from -4°F to 392°F)		

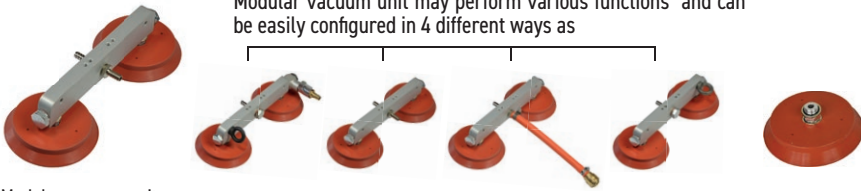
PORTABLE VACUUM PUMP PARAMETERS	
Voltage	1~ 230 V, 50-60 Hz 1~ 115 V, 50-60 Hz
Power	400 W
Gauge pressure obtainable	-0.8 bar (-11.5 psig) (where 0 is for atmospheric pressure, and -1 is for perfect vacuum)
Pump capacity	4 m ³ /h (141 ft ³ /h)
Ambient temperature	0-40°C (32-104°F)
Safety reservoir volume	10 l (0.35 ft ³)
Weight (with safety reservoir)	23 kg (51 lbs)

Portable vacuum pump with safety reservoir



- generates vacuum and supports up to 21 vacuum units
- AGR-0541-10-20-00-0 for 230 V
- AGR-0541-10-10-00-0 for 115 V with UK plug

Modular vacuum unit may perform various functions and can be easily configured in 4 different ways as



Modular vacuum unit
 • consists of 2 vacuum pads and manifold block
 MST-0541-10-02-00-0

entry unit

middle unit

extension unit

end unit

Vacuum pad (spare part)
 SSW-0541-99-01-00-0



4-way manifold with connection cable
 • can separately connect vacuum units of up to four rails
 • allows rail leapfrogging during operation
 ROZ-0541-04-00-00-0



Pump connection hose
 • connects pump to entry vacuum unit
 (10 m / 33 ft)
 PWD-0541-06-00-00-0



Cut-off valve (for entry vacuum unit)
 ZWR-0541-10-01-30-0



Threaded plug (for end vacuum unit)
 KRK-0541-99-00-00-0



Hose clamp
 OPS-000005



2-meter / 7-foot hose
 • for interconnecting vacuum units within rail tracks
 • 1 per rail track
 • should be cut to the required length
 PWD-0541-10-07-00-0



Coupled hose
 • for interconnecting vacuum units of different rail tracks
 • 1 per additional rail track (serial connection)
 PWD-0541-10-04-00-0



Quick coupling
 SZB-000018



Hose fitting
 KRC-000013



Hose extension adapter
 LCZ-0541-05-00-00-0



Safety eye bolt
 SRB-000365

Track elements



Hi Flex Track
 min OD 1500 mm
 TRO-0673-00-00-0



Semi-flexible track
 length 2 m (6.5 ft)
 PRW-0482-15-05-00-0



Rigid track length
 2 m (6.5 ft)
 PRW-0482-47-00-00-0



Bracket for vacuum modular unit for semi-flexible track and Hi Flex track
 DYS-0541-11-01-00-0



Flexible trackway
 length 1.88 m (6.1 ft).
 PRW-0466-71-00-00-0

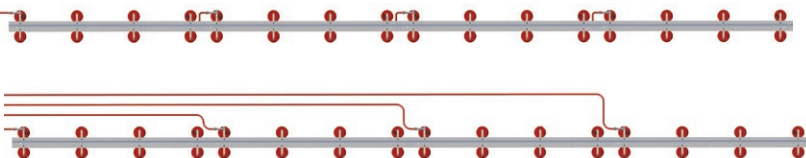


Bracket for vacuum modular units for flexible trackway
 DYS-0466-71-04-00-0

System configuration for serial connection

System includes:

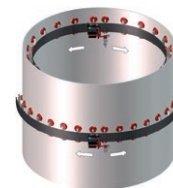
- Entry vacuum unit (1 unit per rail track)
- Middle vacuum units (up to 5 units per rail track)
- Extension vacuum unit (for serial connection)



4 vacuum units are required per rail track placed in horizontal position



7 vacuum units are required per rail track placed on walls or curvatures



Vacuum units in use on stainless steel or aluminum tanks



Minimal OD is 10 m (32 ft)



Minimal OD is 3 m (10 ft)



OSC-8 | PENDULUM WEAVE WELDER



The OSC 8 pendulum oscillator is designed to oscillate MIG/MAG torches with the diameter of 16–22 mm (5/8–7/8”).

The oscillator is installed onto a 22 mm (7/8”) diameter rod and connected to a welding device.

It can be controlled manually or by using an external START-STOP switch.

Using an optional freestanding support allows welding of rotating pipes or moving plates. An optional power supply allows connecting the oscillator to a 230 V or 115V power source.

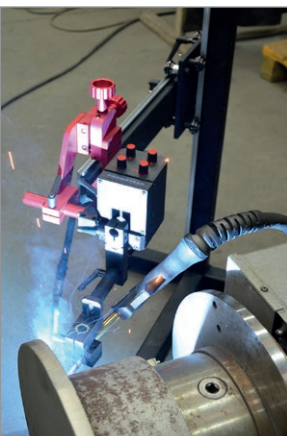
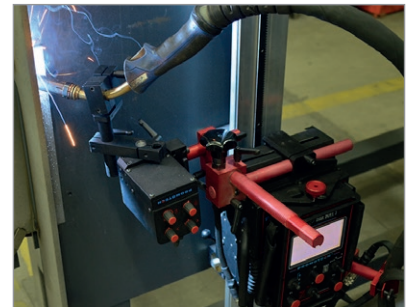
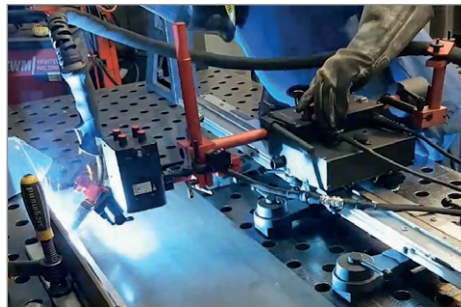
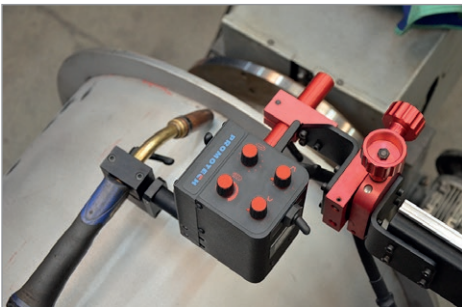
OSC-8 is suitable for MIG/MAG automate processes in heavy fabrication industries such as: pipeline and bridge construction, shipbuilding and tank welding.

Features & Benefits:

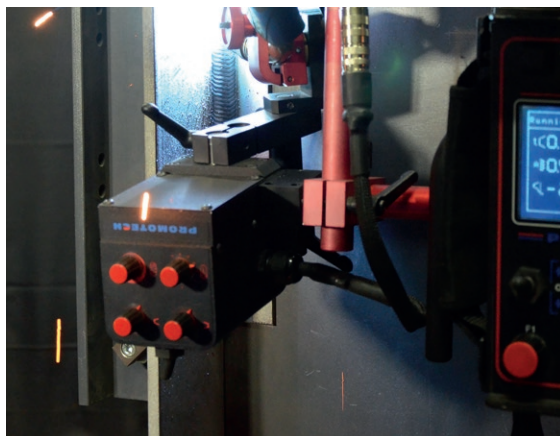
- lightweight and compact design
- two control modes: manual and external start
- four adjustable parameters (oscillation width, oscillation speed, oscillation dwell time on ends)
- simple control panel (four knobs)
- can work as stand-alone device or be a part of more advanced welding system
- optimal solution for various welding applications
- real improvement of the welding process
- uniform and high quality welding
- supply voltage 14-24 V (direct connection to the welding tractor or an external automation system)
- optional power supply 115 VAC or 230 VAC



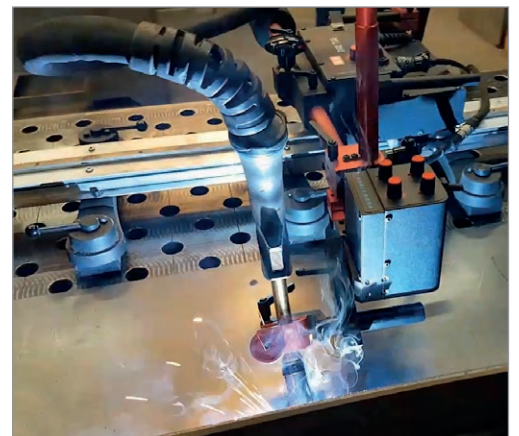
OSC-8 can work either as stand-alone Pendulum Weave Welder or along with freestanding support or along with welding tractors.



OSC-8 along with Freestanding Support

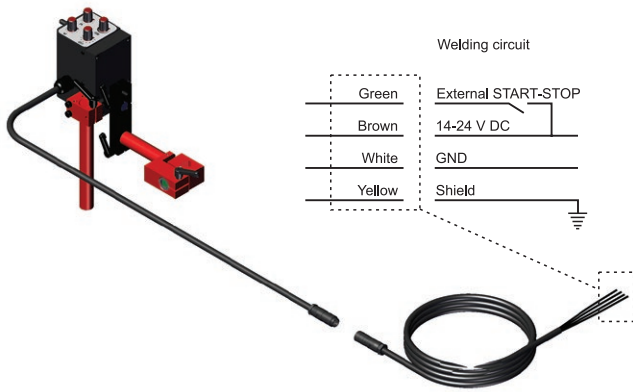


OSC-8 along with Rail Titan

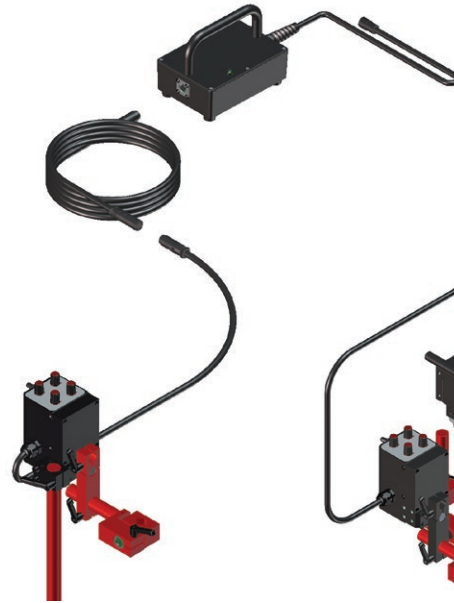


OSC-8 along with Rail Tug tractor

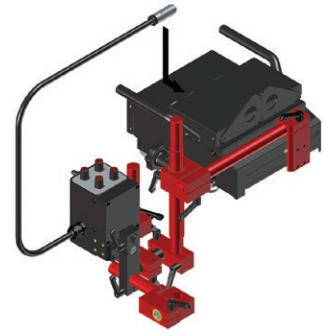
Depending on welding system configuration in use the oscillator can work in either manual or external start mode and be connected to:



• welding circuit

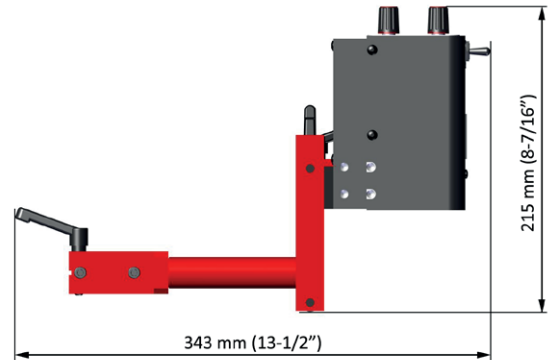
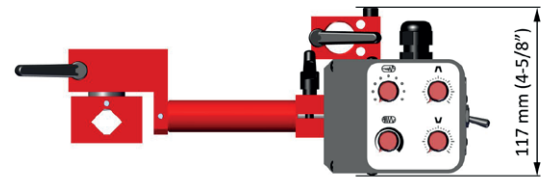


• power supply

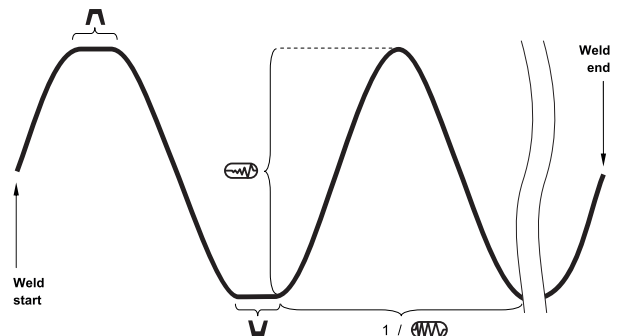


• or welding tractor

OSC-8 TECHNICAL SPECIFICATION	
Voltage	14-24 V DC
Power	50 W
Torch type	MIG/MAG
Torch diameter	16-22 mm (5/8-7/8")
Oscillation type	Pendulum
Oscillation width at r=150 mm (6")	1-30 mm (1-100%) 1/32-1-3/16" (1-100%)
Oscillation speed at oscillation width of 10 mm (3/8") and zero dwell time on ends	12-115 cycles/min (1-100%)
Oscillation dwell time on ends	0-3 s
Maximum torque	8 N·m (5.7 lb·ft)
Required ambient temperature	0-50°C (32-122°F)
Weight	2 kg (4 lbs)
Product code:	OSC-0497-10-00-00-0



Parameter	Value	Description
	0-100%	Oscillation width.
	0-100%	Oscillation speed.
	0-3 s	Oscillation dwell time in the top position.
	0-3 s	Oscillation dwell time in the bottom position.





Optional equipment:

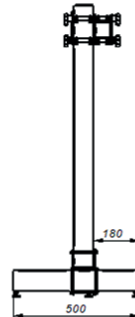
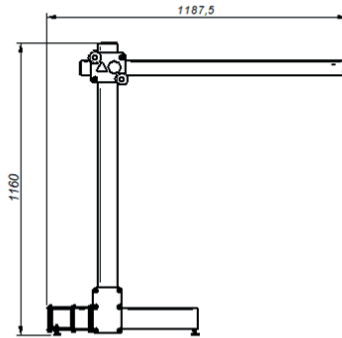
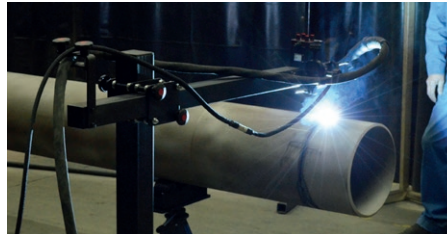
Power Supply (to be chosen from available voltage versions)

Product codes:

- ZSL-0497-16-00-00-0 (230 V CEE)
- ZSL-0497-16-00-01-0 (115 V USA)
- ZSL-0497-16-00-02-0 (230 V AU)
- ZSL-0497-16-00-03-0 (230 V UK, type G)
- ZSL-0497-16-00-04-0 (230 V IN, type D)

MINI C&B type PRO-WA 1X1

- Holds the oscillator to allow oscillation welding of rotating pipes or moving plates
- Product code: STJ-0709-10-00-00-0



MINI C&B type PRO-WA 1X1	
Height	1160 mm
Length	1188 mm
Width	500 mm
Vertical movement range	810 mm
Horizontal movement range	815 mm
Maximum load with full extension of horizontal arm	7 kg

Rail Titan accessories:



Standard shipping set:

- Oscillator - 1 unit
- 2 m (6.5 ft) power cord - 1 unit
- Low rod torch holder with clip - 1 unit
- Oscillator arm - 1 unit
- Clamping block - 1 unit
- M6x40 screw - 2 units
- 80 mm (3") rod - 1 unit
- 5 mm hex wrench - 1 unit
- Operator's Manual - 1 unit



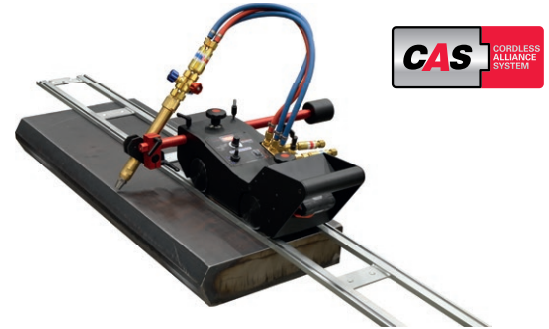


DRAGON | CUTTING TRACK TRACTOR

Dragon is intended to transport different types of oxy-fuel cutting torches with a grip diameter 28-35mm (1-1/8" to 1-3/8") to perform machine quality cutting and beveling processes in a variety of applications.



DRAGON for Oxy-Fuel

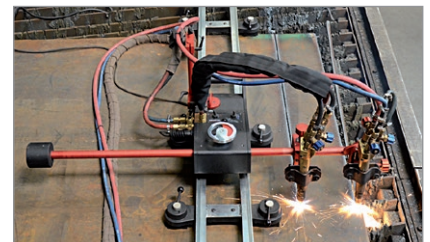
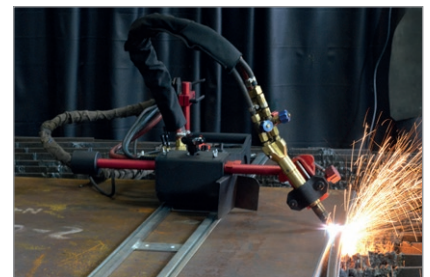
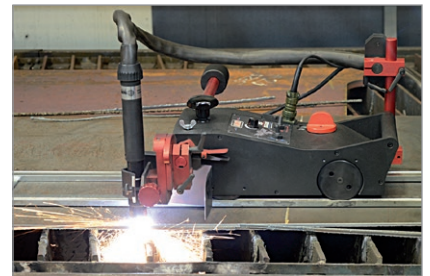


DRAGON BATTERY for Oxy-Fuel

High speed plasma cutting and beveling is available by means of Dragon HS

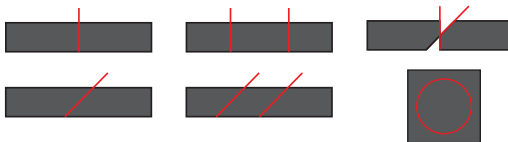


DRAGON HS for plasma



Primary features and benefits:

- State-of-the-art, digitally controlled track torch
- Cutting and beveling up to 45° (also parallel by means of 2 torches)
- Quick clamping torch holder for torch diameter from 28 mm to 35 mm
- Advanced speed control system with implemented digital PID regulator
- LED display with readout of actual and set speed, and report messages
- Rigid heat-proof design
- 2-wheel drive with auto - braking drive unit
- Quick drive release switch for easy re-positioning
- Runs on a rail or directly on a workpiece
- Connectable rails to form various lengths
- Wide assortment of optional accessories for variety of applications, like machine barrel torch holders, manifolds, circle cutting attachment etc.



TECHNICAL SPECIFICATIONS		
	Dragon	Dragon HS
Voltage	1- 115-230 V, 50-60 Hz 42 V, 50-60 Hz	~ 115-230 V, 50-60 Hz
Power	20 W	20 W
Operating position	horizontal	horizontal
Torch diameter	28-35 mm (1.10-1.38")	28-35 mm (1.10-1.38")
Ground clearance	8 mm (0.31")	8 mm (0.31")
Speed	0-150 cm/min (0-59 in/min)	10-300 cm/min (4-118 in/min)
Weight	16.8 kg (37.0 lbs)	16.8 kg (37.0 lbs)
P. Code (115-230 V, 50-60 Hz, plug EU)	WOZ-0475-10-20-00-3	WOZ-0527-10-20-00-1
P. Code (115-230 V, 50-60 Hz, plug UK)	WOZ-0475-10-10-00-3	WOZ-0527-10-10-00-1
P. Code (42 V, 50-60 Hz)	WOZ-0711-10-04-00-0	-

Standard accessories for both Dragon and Dragon HS



580 mm (22.8") Geared Rack
RAM-0475-07-00-00-0



Counterweight 1.3 kg (2.9 lbs)
PWG-0475-09-00-00-0



Standard Torch Holder with angle adjustment
UCW-0475-28-00-00-0



Power cord 3m (9,7 ft)

Optional accessories for both Dragon and Dragon HS



1000 mm (39.4") Geared Rack
RAM-0475-23-00-00-0



Large Counterweight 2,6 kg (5,7lbs)
PWG-0475-10-00-00-0



Track Assembly 1800 mm (70,9") V" Groove Center Line 152 mm (6")
TRO-0475-13-00-00-0



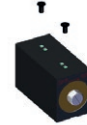
Magnetic unit
ZSP-0475-92-00-00-0



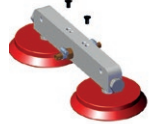
Lightweight Magnetic Unit
MST-0677-00-00-00-0



Heat-resistant magnetic unit
ZSP-0475-93-00-00-0



Magnetic Narrow Unit with hexagon
PDS-0582-10-00-02-0



Vacuum Modular Unit
MST-0541-10-02-00-0



Slide Rack Holder
UCW-0475-15-00-00-1



Roller Support
PDT-0475-26-00-00-0



Cable Anchor
PDT-0475-34-00-00-0



Precise Torch Holder with angle and height adjustment
UCW-0475-08-00-00-0



Circle Cutting Attachment
CYR-0475-22-00-00-0



Heat Protection Shields
left: OSL-0475-54-00-00-0
right: OSL-0475-55-00-00-0



Heat Protection Shield (bottom)
OSL-0475-53-00-00-0



Standard Torch Holder 28-35 mm (1.10-1.38")
ZCS-0475-28-10-00-0

Optional accessories for Oxy-fuel

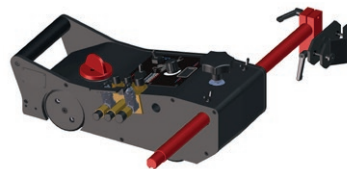
Machine Barrel Torch Holder
Ø 30mm (1.18")
UCW-0475-61-00-00-0



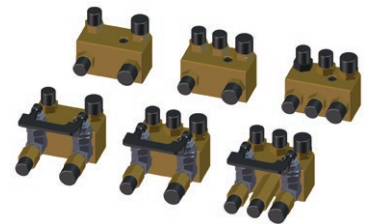
Machine Barrel Torch Holder
Ø 35mm (1.38")
UCW-0475-29-00-00-1



Gas Manifold type	Metric	Imperial
Manifold 2x2	RZD-0475-64-00-00-0	RZD-0475-68-00-00-0
Manifold 2x3	RZD-0475-63-00-00-0	RZD-0475-67-00-00-0
Manifold 3/3	RZD-0475-74-00-00-0	RZD-0475-73-00-00-0
Manifold 2x2 with cut-off valve	RZD-0475-65-00-00-0	RZD-0475-70-00-00-0
Manifold 2/3 with cut-off valve	RZD-0475-66-00-00-0	RZD-0475-69-00-00-0
Manifold 3/3 with cut-off valve	RZD-0475-72-00-00-0	RZD-0475-71-00-00-0



Precise Machine Torch Holder
Ø 30mm (1.18")
UCW-0475-59-00-00-0



Precise Machine Torch Holder
Ø 35mm (1.38")
UCW-0475-42-00-00-1

Optional accessories for Plasma (Dragon HS)



Plasma Arc Ignition
ZSP-0475-58-00-00-0



Plasma Arc Ignition Cable
KBL-0475-58-05-00-0





PRO-WP 150 PRO-WP 300

WELDING POSITIONERS

The welding positioners enable round or tubular pieces of metal to be rotated easily, provide better weld seam accessibility, can help produce high quality welds and increase deposition rates.

Frequency inverter ensures continuous speed adjustment and speed stabilization at the set value.

They reduce time and effort for the welders, who can focus on their job with no need to constantly move around their workspace in order to get the best position.

The compact design takes up minimal floor space and tilting up to 90 degrees improves ergonomics of the workspace.

Selection of various auxiliary accessories make it possible to create an advanced modular welding station and customize it depending on required welding or cutting applications to maximize production efficiency.

Primary features and benefits:

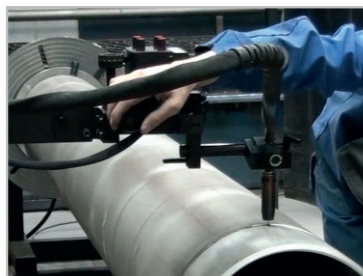
- Left or right rotation
- Continuous speed adjustment
- Speed stabilization within full speed range from 0,12 rpm up to 2,4 rpm
- Start/Stop (both controller and foot pedal)
- Arc ignition
- Remote control
- Foot pedal for hands-free operation
- Heavy duty construction
- Lots of auxiliary accessories enable building a modular welding station tailored for various welding and cutting applications



Technical specification	PRO-WP 150	PRO-WP 300
Voltage	1~ 220-240 V, 50-60 Hz 1~ 100-120 V, 50-60 Hz	1~ 220-240 V, 50-60 Hz 1~ 100-120 V, 50-60 Hz
Power	0,25 kW	0,25 kW
Speed range min/max	0,12 - 2,4 rpm	0,12 - 2,4 rpm
Max load capacity	150 kg (331 lbs)	300 kg (661 lbs)
Mass center offset from the table at a 90° tilt	up to 100 mm	up to 100 mm
Faceplate diameter	450 mm (17.7")	630 mm (24.8")
Hollow-shaft inside diameter	28 mm (1.1")	28 mm (1.1")
Tilting range with continuous angle adjustment	0-90°	0-90°
Tilting	manual	manual
Max. welding current transfer	400 A	400 A
Weight	115 kg (254 lbs)	150 kg (330 lbs)
Product code:	PZY-0681-10-10-00-0	PZY-0682-10-10-00-0



The arc ignition allows the welding torch to be switched on and off remotely.



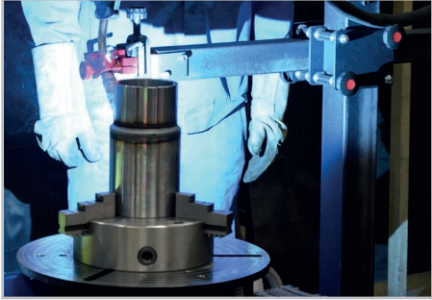
Optional accessories for various welding and cutting applications:

- Lathe self-centering chuck D250



External clamping diameter: Φ 90-250 mm
 Internal clamping diameter: Φ 6-110 mm,
 Φ 80-250 mm

UCW-0681-18-00-00-0

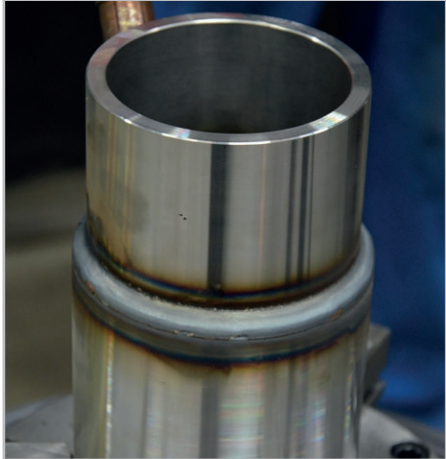
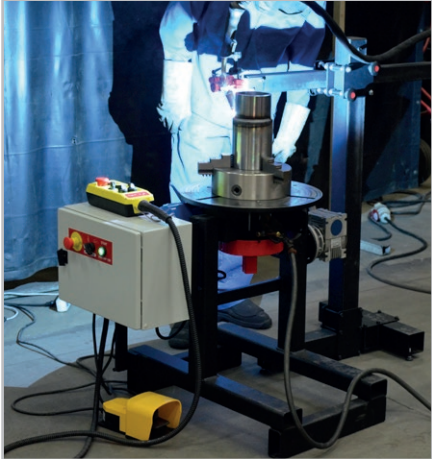


- Lathe self-centering chuck D400



External clamping diameter: Φ 120-400 mm
 Internal clamping diameter: Φ 15-210 mm,
 Φ 120-400 mm

UCW-0681-17-00-00-0



- Keyless self-centering chuck DD300



External clamping diameter: Φ 170 - 280 mm
 Internal clamping diameter: Φ 80 - 190 mm

UCW-0681-19-00-00-0

- Keyless self-centering chuck DD400



External clamping diameter: Φ 250 - 380 mm
 Internal clamping diameter: Φ 120 - 250 mm

UCW-0681-20-00-00-0

- Torch Holder



To be fixed directly on positioner
 UCW-0681-14-00-00-0



- MINI C&B type PRO-WA 1X1



Product code: STJ-0709-10-00-00

MINI C&B type PRO-WA 1X1	
Height	1160 mm
Length	1188 mm
Width	500 mm
Vertical movement range	810 mm
Horizontal movement range	815 mm
Maximum load with full extension of horizontal arm	7 kg

- Cross slide assembly (option)



35 mm x 35 mm (left & right, up & down)
ZSP-0466-14-00-00-0

- Roller support



Load capacity: 1000 kg (2200 lbs)
WSP-0681-16-00-00-0

- Pendulum Oscillator OSC-8

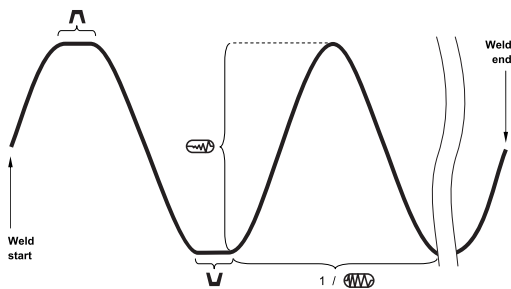


Product code: OSC-0497-10-00-00-0

- Power Supply



Product codes:
ZSL-0497-16-00-00-0 (230 V CEE)
ZSL-0497-16-00-01-0 (115 V USA)
ZSL-0497-16-00-02-0 (230 V AU)
ZSL-0497-16-00-03-0 (230 V UK, type G)
ZSL-0497-16-00-04-0 (230 V IN, type D)



Parameter	Value	Description
	0-100%	Oscillation width
	0-100%	Oscillation speed
	0-3 s	Oscillation dwell time in the top position
	0-3 s	Oscillation dwell time in the bottom position



OSC-8 PENDULUM WEAVER	
Voltage	14-24 V DC
Power	50 W
Torch type	MIG/MAG
Torch diameter	16-22 mm (5/8-7/8")
Oscillation type	Pendulum
Oscillation width at r=150 mm (6")	1-30 mm (1-100%) 1/32-1-3/16" (1-100%)
Oscillation speed at oscillation width of 10 mm (3/8") and zero dwell time on ends	12-115 cycles/min (1-100%)
Oscillation dwell time on ends	0-3 s
Maximum torque	8 N-m (5.7 lb-ft)
Required ambient temperature	0-50°C (32-122°F)
Weight	2 kg (4 lbs)
Product code:	OSC-0497-10-00-00-0

Clamping accessories for welding torches (to choose from)



- Short rod torch holder with clamp 16-22 mm
UCW-0754-07-00-00
- Long rod torch holder with clamp 16-22 mm
UCW-0752-07-00-00
- Short low rod torch holder with clip 16-22 mm
UCW-0476-06-00-00
- Short rod torch holder with clip 16-22 mm
UCW-0476-27-00-00
- Long rod torch holder with clip 16-22 mm
UCW-0466-22-00-00

Clamping accessories for cutting torches (to choose from)



- Standard torch holder with clamp 28-35 mm and rough angle adjustment
UCW-0475-28-00-00
- Precise torch holder with clamp 28-35 mm and precise angle adjustment
UCW-0475-08-00-00
- Rod 150 mm for cutting torch holders
SLP-0233-13-02-00-1
- Standard machine torch holder for oxy-fuel cutting with vertical position setting and rough angle adjustment
For 30 mm torch with rack:
UCW-0475-61-00-00-0
For 35 mm torch with rack:
UCW-0475-29-00-00-1
- Precise machine torch holder for oxy-fuel cutting with vertical position setting and precise angle adjustment.
For 30 mm torch with rack:
UCW-0475-59-00-00-0
For 35 mm torch with rack:
UCW-0475-42-00-00-1

Clamping set
Product code: ZST-0681-15-00-00

- Clamp 100mm x 32mm x 19mm (3 pcs)
- Clamp 150mm x 32mm x 22mm (3 pcs)
- Step block 28mm x 20mm - 38mm (4 pcs)
- Step block 35mm x 28mm - 64mm (4 pcs)
- Step block 98mm x 64mm - 152mm (4 pcs)
- Double end stud bolt 75mm x 30mm (4 pcs)
- Double end stud bolt 100mm x 30mm (4 pcs)
- Double end stud bolt 125mm x 30mm (4 pcs)
- Double end stud bolt 150mm x 30mm (4 pcs)
- Double end stud bolt 175mm x 30mm (4 pcs)
- Double end stud bolt 200mm x 30mm (4 pcs)
- Flanged nut M10 x 15mm (6 pcs)
- Extension nut M10 x 30mm long (4 pcs)
- T-slot nut 12mm x 18mm x 14mm (6 pcs)

WIRE FEEDER BOOMS

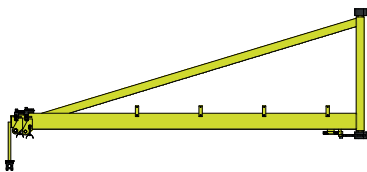
Highly useful devices that improve ergonomics and increase flexibility of welding stations.

Main features and benefits:

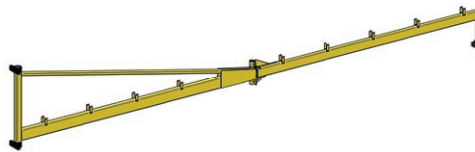
- extended workspace
- more freedom of movement over significantly larger area comparing to the traditional setup
- no wires on the floor
- no mess of tangled cables that in extreme cases can be outright dangerous
- more convenient welding of bigger and complex constructions
- simple and robust device
- can be easily mounted to the construction elements of the production halls with no need for any additional infrastructure
- permissible load: up to 50 kg



Three types to choose from:



Wall mounted telescopic wire feeder boom



Wall mounted pivot wire feeder boom



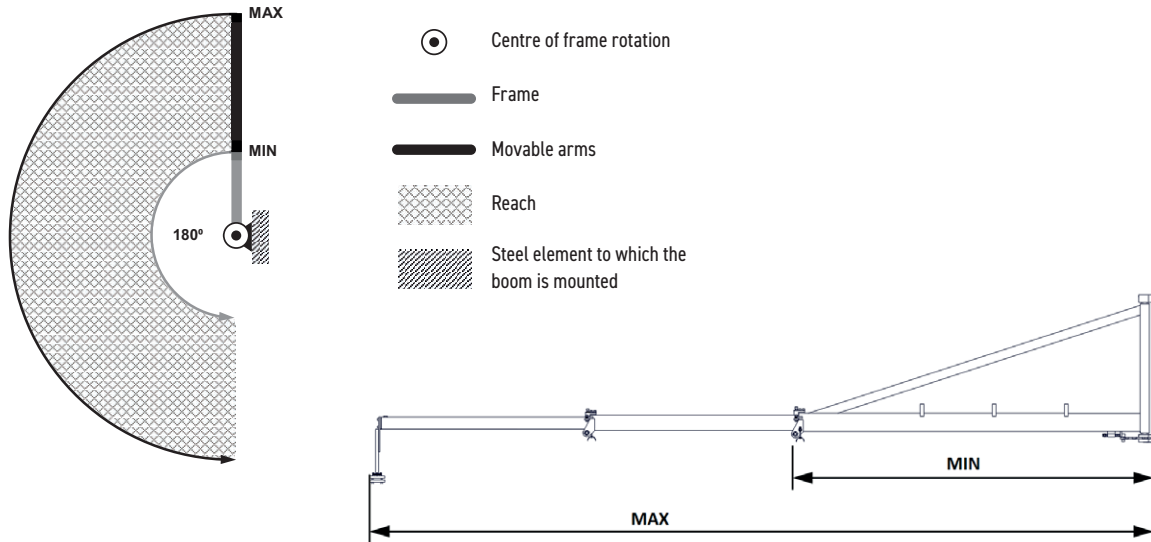
Hydraulic wire feeder boom

Wall mounted telescopic wire feeder boom

- can rotate up to 180° around the vertical axis
- two types of frames: either welded or bolted for self-assembly after shipping
- two adjustable ranges of movable arms: either up to ca 6000 mm or up to ca 8000 mm
- two types of holders: either R type or L type
- eight various models altogether



Adjustable reach of telescopic wire feeder booms

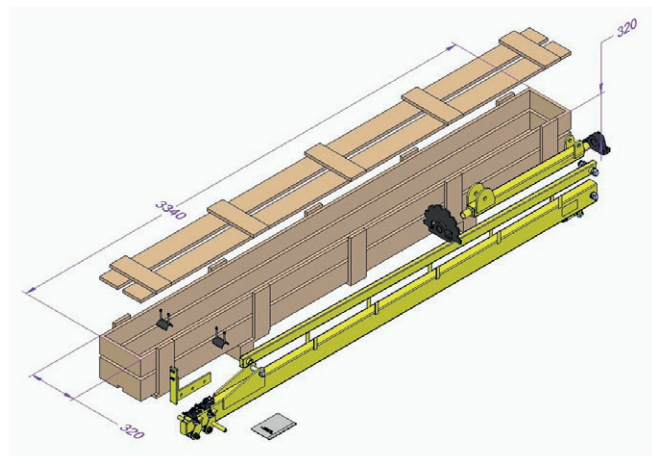
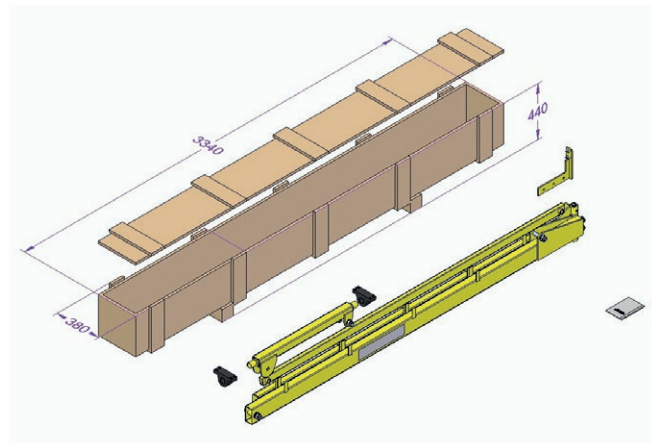


TELESCOPIC	Frame	Reach (Min - Max)	Rotation	Max. load	Weight	Holder type	Product code
TL6000 WL	Welded	2500-5980 mm	0-180°	50 kg	95 kg	L	WSG-0569-10-00-01-0
TL6000 WR	Welded	2550-6030 mm	0-180°	50 kg	95 kg	R	WSG-0569-10-00-02-0
TL8000 WL	Welded	3250-7710 mm	0-180°	50 kg	120 kg	L	WSG-0429-10-00-01-0
TL8000 WR	Welded	3310-7770 mm	0-180°	50 kg	120 kg	R	WSG-0429-10-00-02-0
TL6000 BL	Bolted	2540-5990 mm	0-180°	50 kg	107 kg	L	WSG-0767-10-00-00-0
TL6000 BR	Bolted	2590-6040 mm	0-180°	50 kg	107 kg	R	WSG-0767-10-00-01-0
TL8000 BL	Bolted	3320-7750 mm	0-180°	50 kg	130 kg	L	WSG-0732-10-00-00-0
TL8000 BR	Bolted	3370-7800 mm	0-180°	50 kg	130 kg	R	WSG-0732-10-00-01-0

Bolted frame versions

To optimize transport costs, Promotech offers a new line of wire feeder booms (both pivot and telescopic) with a bolted frame that is disassembled for delivery and ready for self-assembly after shipping.

Each bolted wire feeder boom is individually packaged in a wooden shipping box.



Types of holders

Each telescopic and pivot wire feeder boom comes with a specific type of holder either "R" or "L". Please refer to product codes available in tables at page 4 and 6.

To increase the functionality of the booms, their current design allows the users to replace the original holder with another holder variant even after purchase. Both the ,R' and ,L' brackets are mounted in the same way (see below), so users are able to swap them themselves.



"R" type wire feeder holder
Product code:
MCW-0732-08-00-00-0



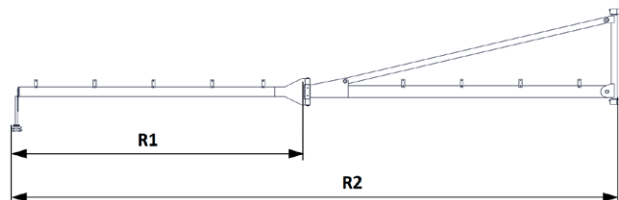
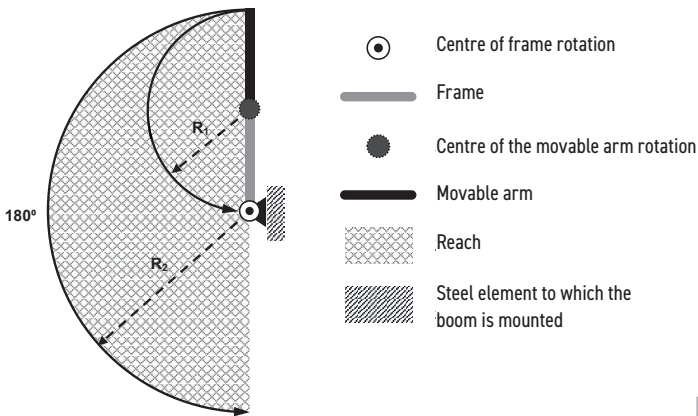
"L" type wire feeder holder
Product code:
MCW-0732-09-00-00-0

Wall mounted pivot wire feeder boom

- can rotate up to 180° around the vertical axis
- additionally the movable arm can be rotated up to 180° around the pivot
- two types of frames: either welded or bolted for self-assembly after shipping
- adjustable reach of movable arm: up to ca 6000 mm
- two types of holders: either R type or L type
- four various models altogether



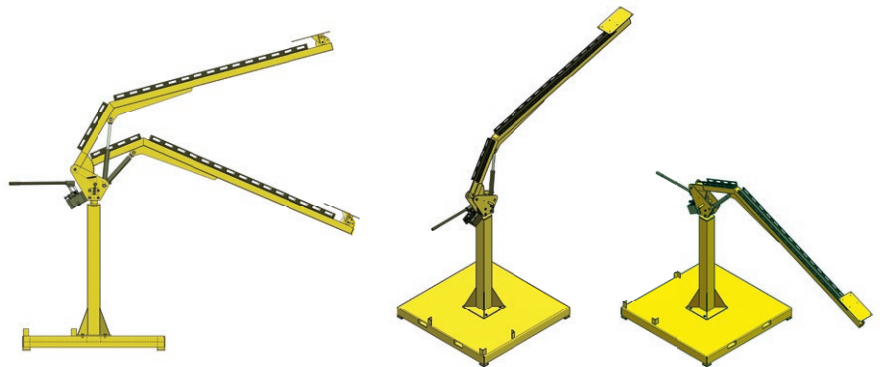
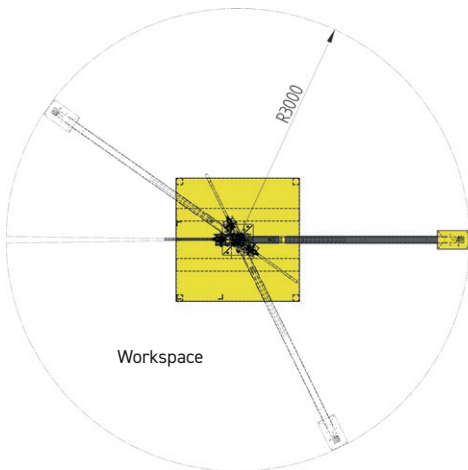
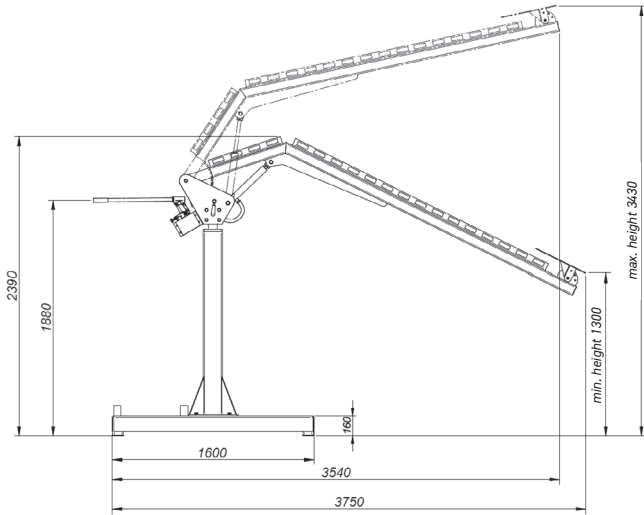
Reach of pivot wire feeder booms



PIVOT	Frame	Reach (R1 - R2)	Rotation	Max. load	Weight	Holder type	Product code
WP6000 WL	Welded	2830-5940 mm	0-180°	50 kg	100 kg	L	WSG-0725-10-00-01-0
WP6000 WR	Welded	2890-6000 mm	0-180°	50 kg	100 kg	R	WSG-0725-10-00-02-0
WP6000 BL	Bolted	2840-5980 mm	0-180°	50 kg	110 kg	L	WSG-0745-10-00-00-0
WP6000 BR	Bolted	2890-6030 mm	0-180°	50 kg	110 kg	R	WSG-0745-10-00-01-0

Hydraulic wire feeder boom

- can be rotated up to 360° around the vertical axis
- adjustable height of the boom from 1300 mm (51") up to 3430 mm (135")
- product code: WSG-000003



HYDRAULIC WIRE FEEDER BOOM Technical specifications	
Reach	3000 mm (118")
Lifting height	1300 - 3430 mm (51 - 135")
Rotation angle	0-360°
Maximum load (wire feeder, wire)	50 kg (110 lbs)
Dimensions [L x W x H]	3750 mm x 1600 mm x 2390 mm (min) / 3430 mm (max) 148" x 63" x 94" (min) / 135" (max)
Weight	330 kg (733 lbs)

Please visit Promotech's channel at YouTube and watch our welding & cutting tractors at work



YouTube PL

Promotech
11.7K subscribers

[SUBSCRIBE](#)

HOME VIDEOS PLAYLISTS COMMUNITY CHANNELS ABOUT



Promotech - Rail Bull Welding Track Carriage

90K views • 9 years ago



Flexible Track Welding System for Gecko and Lizard carriages

37K views • 7 years ago



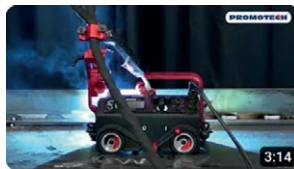
Promotech - Gecko Fillet Welding Carriage

29K views • 9 years ago



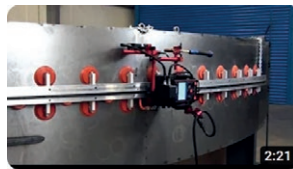
Promotech - Dragon Cutting and Beveling Carriage

18K views • 9 years ago



Lizard | Programmable Welding Carriage

17K views • 4 years ago



Vacuum Track System

14K views • 7 years ago



Rail Bull 2 - All position modular mechanized carriage

14K views • 6 years ago



Promotech - Lizard Programmable Welding Carriage 2013

13K views • 9 years ago



Mini Spider | Fillet Welding Tractor

13K views • 4 years ago



OSC-8 | Pendulum Weave Welder

11K views • 3 years ago



Promotech - Gecko Battery Powered Welding Carriage

10K views • 7 years ago



Easy Welding - Wire Feeder Booms

6.7K views • 4 years ago



Rail Tug | Welding and Cutting Tractor

6.1K views • 4 years ago



Gecko | Fillet Welding Carriage

4.7K views • 4 years ago



Rail Titan Modular TIG MIG MAG Welding and Cutting Rail Tractor

4.2K views • 1 year ago



Get your Gecko tractor ready for non ferrous metals welding

3.3K views • 6 years ago

PROMOTECH Sp. z o.o.
ul. Elewatorska 23/1
15-620, Białystok
POLAND

Tel. +48 85 678 34 95
Fax +48 85 662 78 77
marketing@promotech.eu
www.promotech.eu

PROMOTECH ME (FZE)
P6-111, SAIF ZONE
P.O.BOX. 514914
SHARJAH - U.A.E.

Tel: +971 6 552 9493
Fax: +971 6 552 9053
Mobile: +971 56 2935337
infoPME@promotech.eu
akumar@pme.promotech.eu
www.promotech.eu

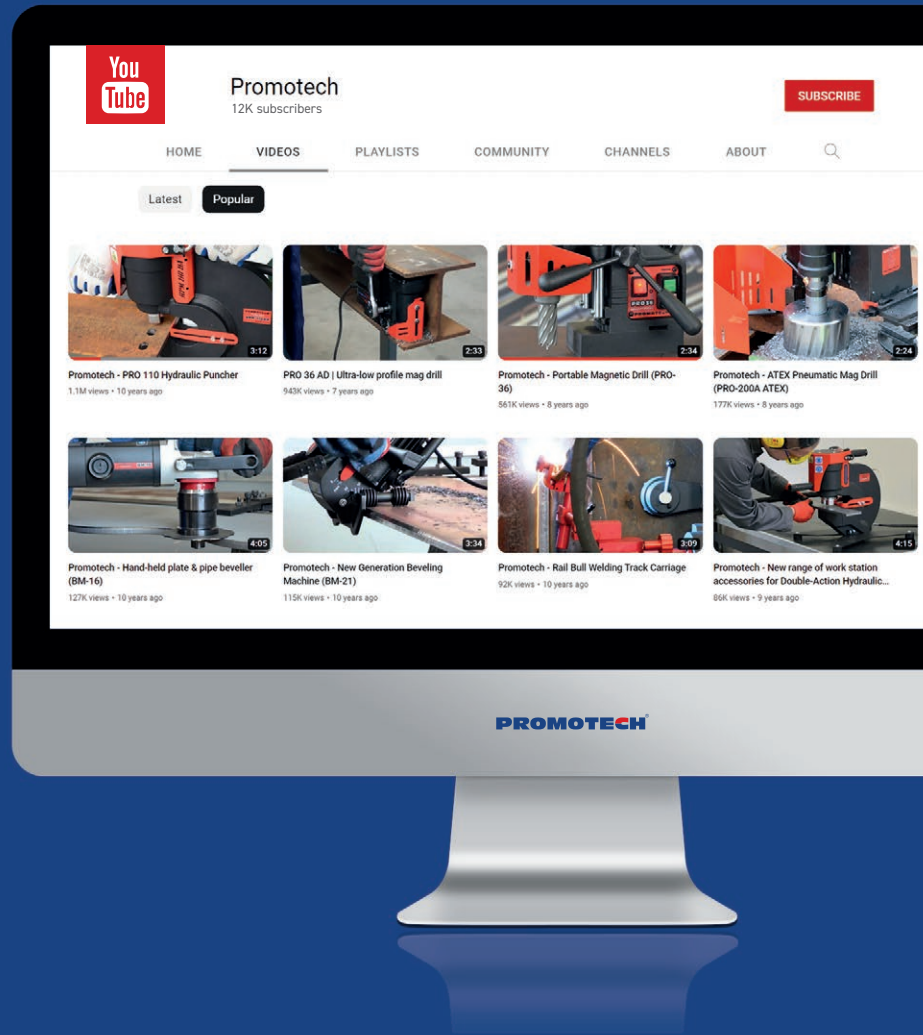
PROMOTECH FABRICATION
MACHINES PVT LTD
Corporate Office:
Plot 231, Phase-5, Sector 53,
I/E HSIIDC, Kundli, Sonipat - 131028,
Haryana, INDIA

Mobile: +91 966 766 0304
info@pfm.promotech.eu
www.promotech-india.in

Promotech Deutschland GmbH
Waldseer Straße 11
D-88326 Aulendorf
Deutschland

Mobile: +49 160 613 6666
Phone: +49 7525 507955-0
dach@pdg.promotech.eu
www.promotech.eu

smart tools for heavy tasks



FOLLOW US FOR UPDATE AND MORE

www.promotech.eu

PROMOTECH[®]



Mitglied im DVS – Deutscher Verband für
Schweißen und verwandte Verfahren e. V.



Your local dealer: