

PRO-50/2 ATEX | 2-SPEED PNEUMATIC MAG DRILL

The PRO-50/2 ATEX machine has been designed to produce 50 mm holes with annular cutters and 23 mm holes with twist drill bits.

The combination of a pneumatic drive and a permanent magnetic base eliminates the need for an electric power supply.

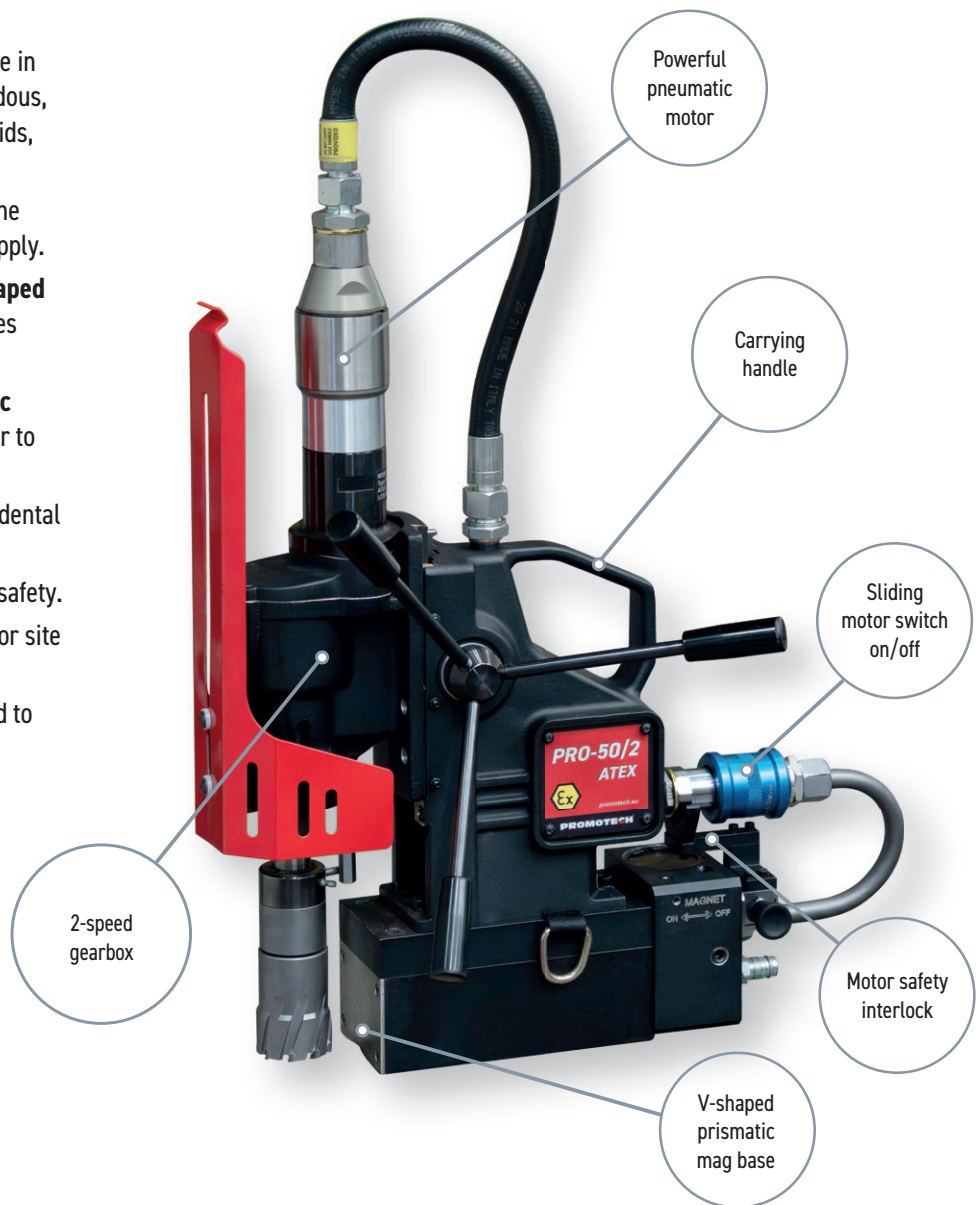
This mid-sized ATEX-approved, pneumatic drill is ideal for use in confined and hazardous environments such as oil rigs, refineries, shipbuilding, and the petrochemical industry, where electric appliances are prohibited for safety reasons.

Features & benefits:

- **ATEX-approved materials.** Safe for use in Ex zones and environments with hazardous, flammable, or combustible vapors, liquids, dust, or residues.
- **Strong permanent magnet.** Secures the drill without the need for an electric supply.
- **Permanent magnetic base with V-shaped prismatic foot.** Enables drilling on pipes from 250 mm upwards.
- **Innovative sliding ON/OFF pneumatic motor switch.** Provides compressed air to the pneumatic motor.
- **Mechanical safety lock.** Prevents accidental motor activation.
- **Magnet ON/OFF indicator.** Enhances safety.
- **Compact size and lightweight.** Ideal for site work.
- **2-gearbox.** Allows speed to be matched to the tool



PRO 50/2 ATEX conforms to II 2G Ex h IIC 135°C (T4) Gb and II 2D Ex h IIIB T135°C Db requirements for equipment used in hazardous environments



Core drill
50 mm



Twist drill
23 mm



Depth of cut
50 mm



Stroke
150 mm



Speed
190 rpm, 290 rpm



Motor Power
800 W



Weight
24,5 kg

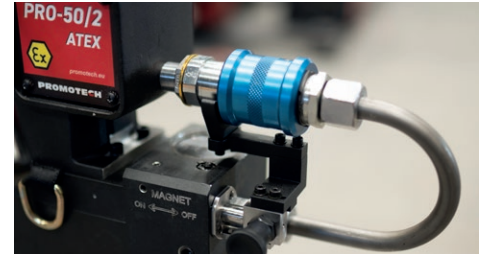
PRO-50/2 ATEX TECHNICAL SPECIFICATIONS

Motor speed (under load)	190 rpm (gear I) 290 rpm (gear II)
Motor power	800 W
Weight	24,5 kg
Max milling capacity	50 mm (2")
Max drilling capacity	23 mm (13/16")
Stroke	150 mm
Max depth of cut	50 mm (2")
Tool holder	19 mm (3/4") Weldon
Air consumption	1400 l/min (50 CFM)
Pressure	6 bar (87 psi)
Air connection	CEJN 410 DN 10.4 R 3/8" BSPT fitting for quick coupling
Spindle	MT2
Minimum diameter of air hoses	13 mm (33/64")
Required ambient temperature	0 - 40 °C (32 - 104 °F)
Minimum workpiece thickness	10 mm (25/64")
Minimum pipe diameter*	250 mm (9 27/32")
Magnetic base holding force (surface with the thickness of 25 mm and roughness Ra = 1.25)	968 kgf (9500 N)
Magnetic base dimensions	90 mm x 192,5 mm x 66,5 mm
Potentially explosive atmosphere	II 2G Ex h IIC 135 C (T4) Gb II 2D Ex h IIIB T135 C Db
Overall dimensions L x W x H	487 mm x 186 mm x 790 mm
Product Code	WRT-0818-10-00-00

*always check the clamping of the magnetic base using the indicator



2-gearbox to match the speed to the tool



Protection against accidental motor start-up when the magnetic base is not activated



Clamping level indicator for safety and security



Max depth of cut 50 mm



V-shaped prismatic mag base for pipe drilling

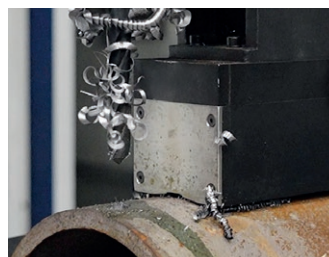
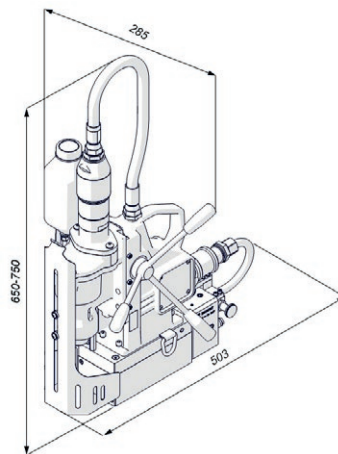


Max milling capacity 50 mm

Standard shipping set:

- pneumatic drilling machine
- metal box
- feed handles
- MT2 arbor
- MT2 drift
- safety chain
- cooling system
- protective spring for cooling hose
- air quick coupling
- 2,5 mm hex wrench
- 4 mm hex wrench
- 5 mm hex wrench
- 8 mm combination wrench
- operator's manual

Dimensions:



Max drilling capacity 23 mm

