

■ GECKO BATTERY | MOBILE WELDING TRACTOR

The GECKO BATTERY is a battery-powered trackless welding tractor designed to produce continuous butt and fillet welds using MIG/MAG torches.

CAS LiHD battery delivers enough power for handling even the toughest applications with no cables. 4-wheel drive system with magnetic traction and a feedback loop provide speed stabilization in various welding positions.

Constant, continuous and repeatable travel speed enables weld bead geometry that is exact to the required specifications, thus reducing costly over welding and substantially decreasing filler metal usage.

■ Applications:

- Trailer manufacturing
- Truck tanks
- Oil tanks
- Water storage tanks
- Transformers
- Shipyards
- Any application demanding a long, continuous fillet weld



■ Primary features and benefits:

- Convenient 18 V DC battery supply (the same battery for both Mini Spider and Gecko Battery)
- LiHD battery ensures maximum power availability for an extremely long time
- Intelligent battery management for long-lasting battery
- Digital speed control and stabilization for high quality welds
- Multifunctional LED display to present travel speed, units and diagnostic messages
- Compact, lightweight design with durable aluminum cast housing
- Optional accessories make Gecko Battery fit for various applications with carbon steel, stainless steel and aluminum



Continuous
welding



Dual torch
welding



Dual arc ignition



Horizontal speed
0-110 cm/min
(0-43.3 in/min)



Min. path
concave radius
800 mm (31-1/2")

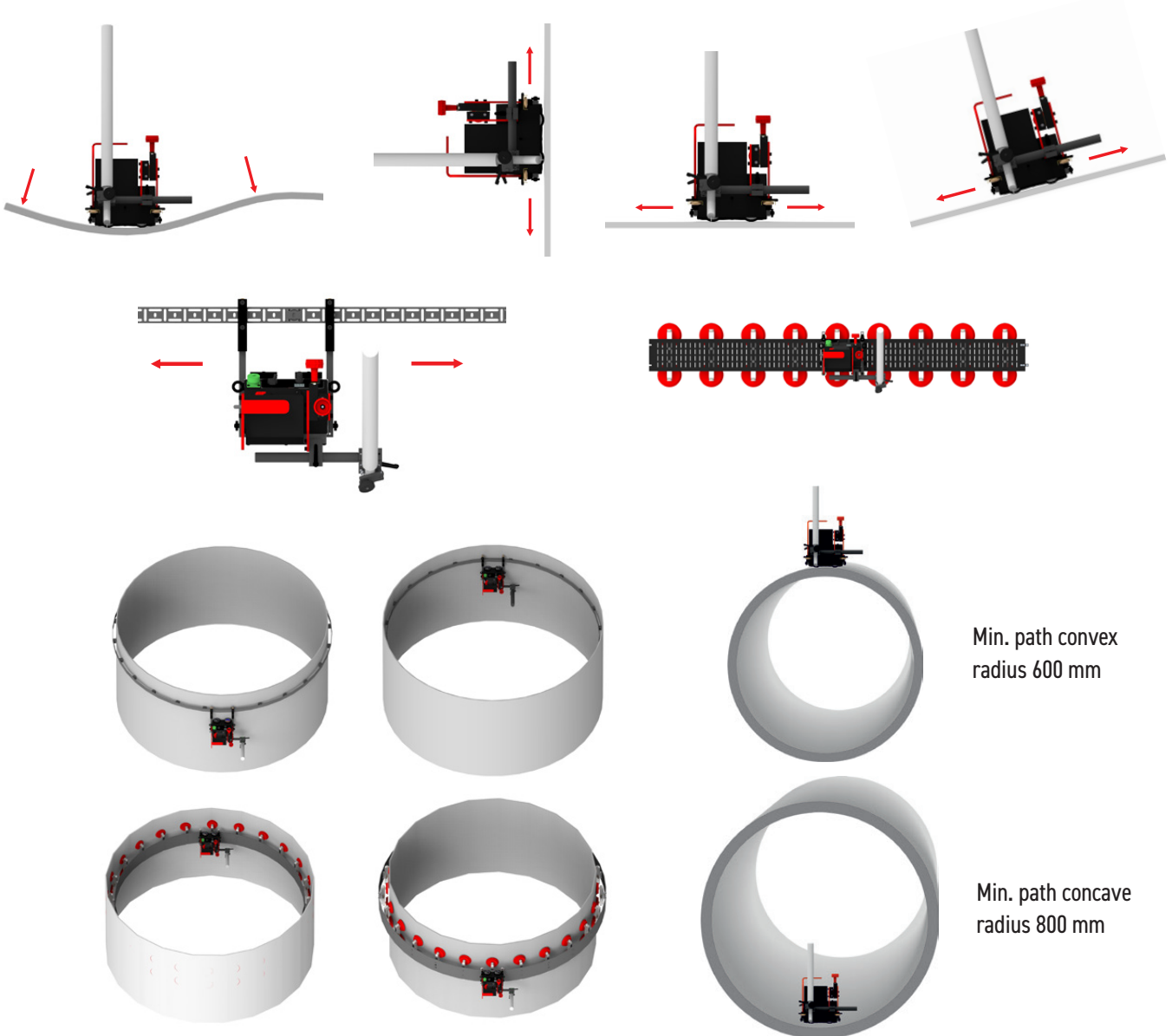


Min. path
convex radius
600 mm (23-5/8")



Weight
8 kg (18 lbs)

Versatility of applications including out-of-position use

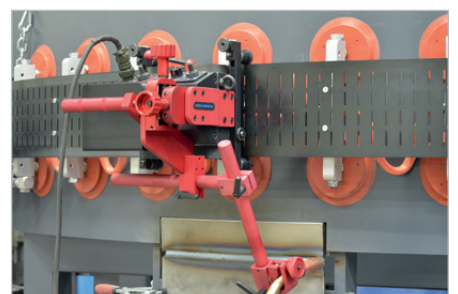


Min. path convex radius 600 mm

Min. path concave radius 800 mm

More features and benefits:

- Strong magnetic traction permits out of position use
- Heat resistant silicone wheels
- Quick clamping torch holder mechanism for different types of MIG/MAG torches with diameters of 16-22 mm (5/8"-7/8"); optionally up to 35 mm (1-3/8")
- Precise torch adjustment with screw drive cross slide
- Consistent heat input reduces distortion
- Reduced wasted filler metal - eliminates over welding
- Automatic arc on/off system initiates welding with travel, simultaneously
- Capable of carrying and controlling two torches
- Self-guiding roller arms eliminate the need for track
- Multi-surface guiding with user-friendly adjustment of tractor position
- Improves working environment - removes operator from heat and fumes
- Thermal cutting possible



Standard accessories



Battery 4.0 Ah
AKM-0738-10-00-01-0
(2 pcs included)



Dual arc ignition cable of 6.5 m (21 ft)
KBL-0466-17-00-00-0



Standard guide arms (set of 2 pcs)
ZST-0752-17-00-00-0



Long rod torch holder with clamp 16-22 mm
UCW-0752-07-00-00-0

Optional accessories for variety of applications



Torch clamp 16-22 mm
ZRZ-0752-07-01-00-0



Torch clip 16-22 mm
ZCS-0476-06-01-00-0



Torch clamp 22-35 mm
ZRZ-0466-19-00-00-0



Short Rod Clamp
WLK-0476-20-01-00-0



Short rod torch holder
with clip 16-22 mm
UCW-0476-27-00-00-0



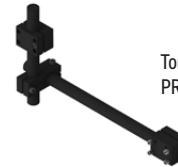
Long Rod Clamp
WLK-0466-04-10-00-0



Short rod torch holder
with clamp 16-22 mm
UCW-0754-07-00-00-0



Long rod torch holder
with clip 16-22 mm
UCW-0466-22-00-00-0



Torch Extension Arm
PRD-0466-43-00-00-0



Battery Charger
LDW-0738-10-00-30-0 (EU)
LDW-0738-04-00-30-0 (UK)



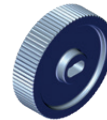
Fall arrester device
URZ-000001



Display shield
OSL-0526-22-00-00-0



Extended cross-slide
0-76 mm (0-3") up-down,
0-35 mm (0-1.38") left-right
ZSP-0466-46-00-00-1



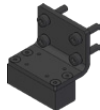
Stainless steel driving wheel
KOL-0466-72-00-00-0



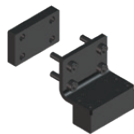
Cable anchor
PDT-0776-04-00-00-0



Dual Torch Mount
PDT-0466-40-00-00-0



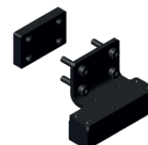
Magnet blocks (front)
clamping force 55 N
BLO-0752-21-00-00-0



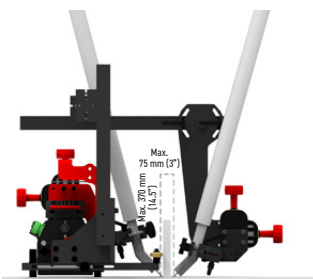
Magnet blocks (back)
clamping force 55 N
BLO-0466-45-01-00-0



Magnet blocks (front)
clamping force 80 N
BLO-0752-22-00-00-0



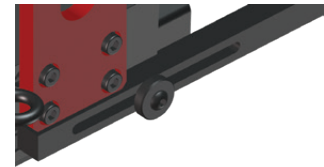
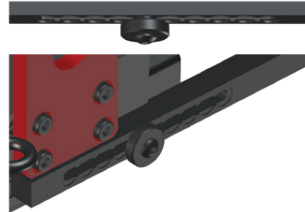
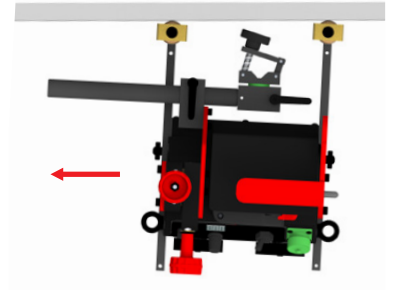
Magnet blocks (back)
clamping force 80 N
BLO-0466-48-01-00-0



Optional accessories for multi-surface guiding and variety of applications

Guide arms enable a proper welding tractor positioning.

- 7 different guide types are dedicated to various welding applications and positions
- include a number of fixing grooves for your convenience
- enable simpler, easier and more consistent adjustment of how guide arms stick out
- secure proper tilting of the tractor into a direction of its movement
- maintain a permanent contact with the workpiece
- allow either interval or continuous guide arms adjustment



Each new guide arm has got a number of indented grooves only on one side.

Interval adjustment of a degree how much the guide arms stick out

Continuous adjustment of a degree how much the guide arms stick out

All types of guide arms are available in pairs of 2 pcs: right and left.



Low guide arms (set of 2 pcs)
PRW-0752-12-00-00-0



High guide arms (set of 2 pcs)
PRW-0752-13-00-00-0



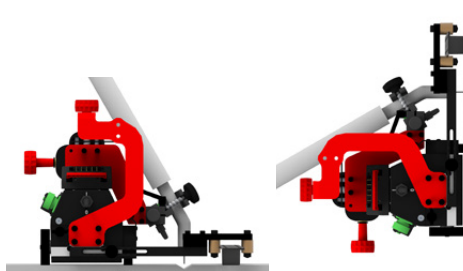
Edge following guide arms (set of 2 pcs)
PRW-0466-41-00-00-1



Adjustable guide arms (set of 2 pcs)
PRW-0752-10-00-00-0

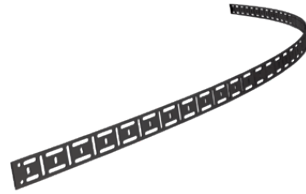
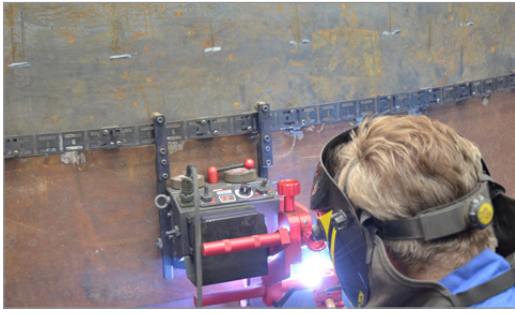


Track following guide arms (set of 2 pcs)
PRW-0752-14-00-00-0



Magnet guide arms (set of 2 pcs)
PRW-0752-11-00-00-0





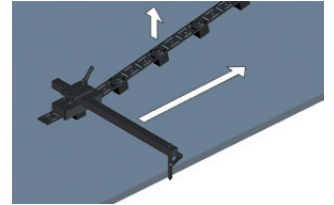
Flexible track length 185cm (6ft) 1pc
Minimum curvature radius of 1.0 m (3.3 ft)
PRW-0466-50-01-01-0



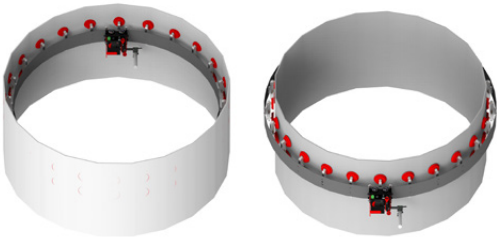
Magnetic block for flexible track
box of 10 pcs
BLO-0466-68-00-00-0



Guide adjustment tool to position the track
parallel to the edge
UST-0466-53-00-00-0

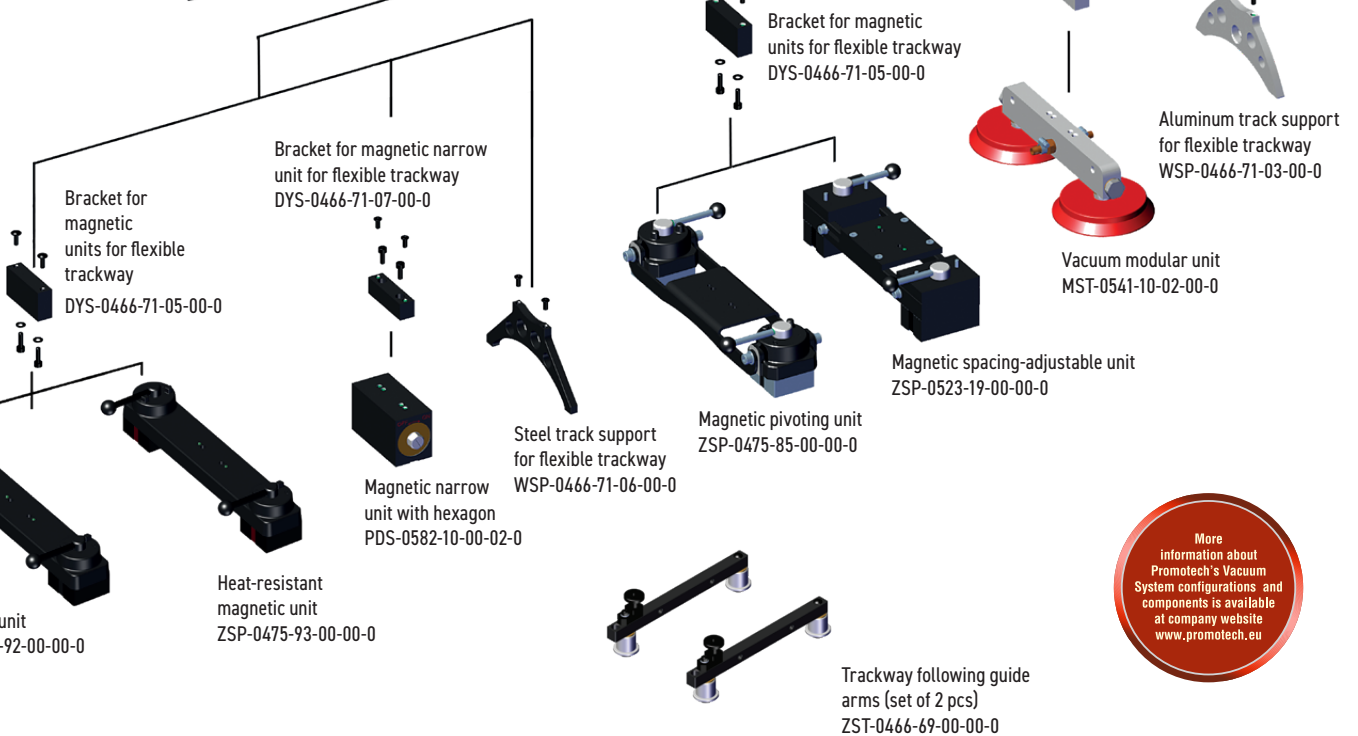
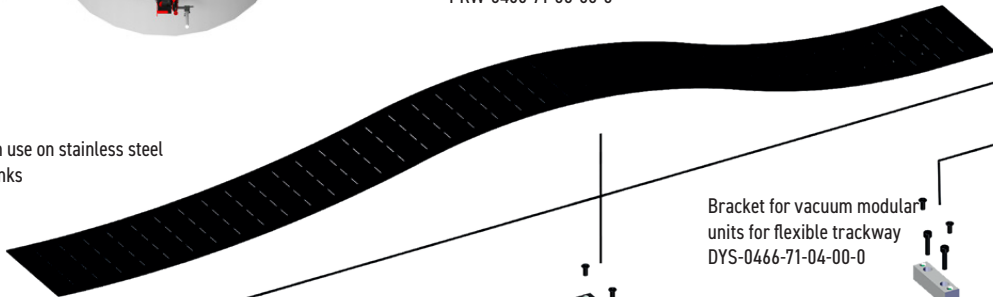


Depending on sort of fixing units in use with flexible trackway, Gecko Battery welding tractor is suitable for applications with carbon steel, stainless steel and aluminum.



Flexible trackway length 1.88 m (6.1 ft).
Minimum curvature radius of 1.25 m (4.1 ft)
PRW-0466-71-00-00-0

Vacuum units in use on stainless steel
or aluminum tanks



More information about Promotech's Vacuum System configurations and components is available at company website www.promotech.eu

TECHNICAL SPECIFICATIONS GECKO BATTERY		
Voltage		18 V DC, 4.0 Ah
Power		20 W
Welding position (according to EN ISO 6947 and AWS/ASME)	Horizontal	PA / 1F / 1G PB / 2F PC / 2G PD / 4F PE / 4G
	Vertical	PF / 3G (ask dealer)
Minimum path curve radius	Outer	600 mm (23-5/8")
	Inner	800 mm (31-1/2")
Torch diameter		16-22 mm (5/8"-55/64") up to 35 mm (1.38") option
Minimum workpiece thickness		4 mm (0.16")
Ground clearance		4 mm (0.16")
Horizontal pulling force		150 N
Cross slide adjustment range		0-35 mm (0-1.38") up-down, left-right
Horizontal speed*		0-110 cm/min (0-43.3 in/min)
Weight		8 kg (18 lbs)
Welding settings storage		1 (last used)
Product Code		WOZ-0776-10-00-01-0

* With battery fully charged.

Standard shipping set:

- Gecko Battery tractor
- Battery 4.0 Ah (2 pcs included)
- Standard guide arms (set of 2 pcs)
- Long rod torch holder with clamp 16-22 mm
- Dual arc ignition cable of 6.5 m (21 ft)
- 4 mm hex wrench
- Plastic box
- Operator's manual



New control system of battery pack:

Detection and supervised parameters:

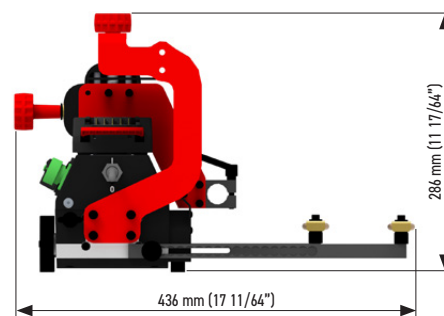
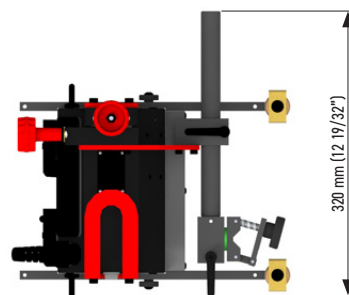
- too low and too high voltage
- too low and too high temperature
- failure of the temperature sensor
- internal battery failure



Benefits:

- over discharge protection
- extended battery life
- high level of safety for both tractor and operator

Dimensions:



More information at www.promotech.eu



PROMOTECH Sp. z o.o.
ul. Elewatorska 23/1, 15-620 BIAŁYSTOK, POLAND
tel. (+48 85) 678 34 05, fax (+48 85) 662 78 77
marketing@promotech.eu www.promotech.eu

Your local dealer:

