

PRO-10 PB | PORTABLE PIPE BEVELER & FLANGE FACER

PRO-10 PB is a heavy-duty ID mounted pipe beveller utilizing self-centering expandable mandrels to provide quick and proper alignment to a pipe or a tube prior to machining operations.

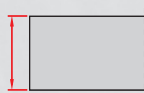
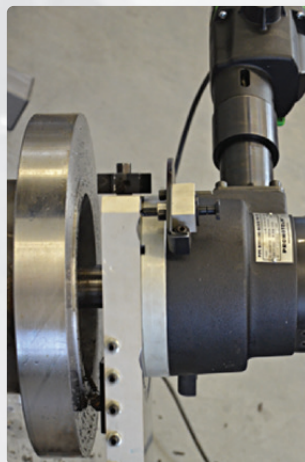
The beveller is capable of milling the OD bevel, root face and ID counterbore to create a uniform wall thickness around the joint and ensure full weld penetration.

Optional accessories extend the possible applications of the PRO-10 PB to include flange facing and oval beveling.



Features and benefits:

- can be mounted in pipe or tubing with a minimum inside diameter of 38 mm (1.5") and bevel outside diameters up to 355 mm (14")
- available with a powerful pneumatic motor or a high-torque electric motor
- spindle disc with two tool bit holders for more stable, less stress-sensitive operation of tool bits
- standard and custom made tool bits available
- J-bevel tool bits available for high welding efficiency on thicker walled pipe
- self-centering expandable ID mounted mandrels enable highly repeatable and consistent fit-up and can be rapidly deployed from one pipe to another to reduce cycle times and improve workflow
- it can be used efficiently by a single operator



Max. wall
thickness 15 mm



ID 84-269 mm
38-84 mm (option)
or 270-349 mm (option)



Facing off



Pipe OD
beveling



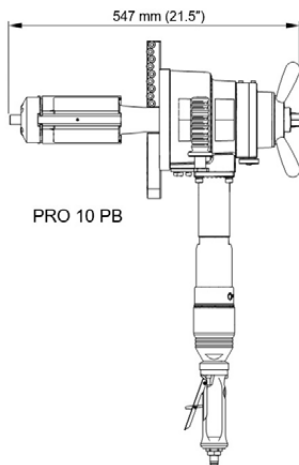
Pipe ID
beveling



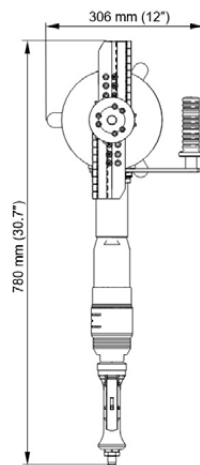
J-groove beveling
(option)

Technical specifications	PRO-10 PB with electric motor	PRO-10 PB with pneumatic motor
Electric motor	1.8 kW	-
Supply	110-120 V / 50-60 Hz or 220-240 V / 50-60 Hz	-
Rotational speed (nominal)	gear 1-12 to 29 rpm gear 2-41 to 96 rpm	- -
Pneumatic drive	-	1,8 kW
Air requirement	-	0,6 MPa
Air consumption	-	1750 NI/min
Rotational speed (without load)	-	17 rpm
Rotational speed (nominal)	-	9 rpm
Min ID	84 mm (3.31"); 38 mm - option	84 mm (3.31"); 38mm - option
Max ID	269 mm (10.59"); 349 mm (13.74") - option	269 mm (10.59"); 349 mm (13.74") - option
Max OD	273 mm (10.75"); 355 mm (13.98") - option	273 mm (10.75"); 355 mm (13.98") - option
Max. wall thickness	15 mm (0.59")	15 mm (0.59")
Weight (incl. motor)	38 kg (84 lbs)	35 kg (77 lbs)

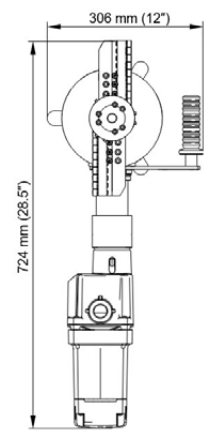
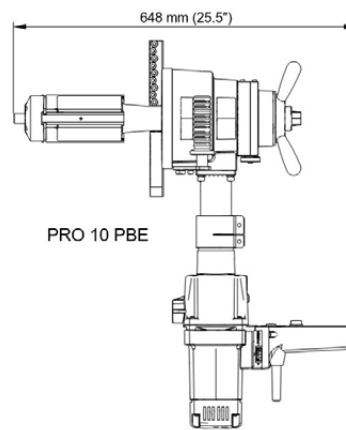
Dimensions



PRO-10 PB with pneumatic motor



PRO-10 PB with electric motor



Standard shipping set:

- PRO-10 PB (without motor, tool bits)
- Metal box
- Standard self-centering expandable mandrel for pipe ID \varnothing 84 – 269 mm (3.31 – 10.59")
- Jaw blocks (1,2,3,4,5,6) and adapter – 3 sets
- Set of tools
- Coolant container
- Operator's manual

Product code: UKS-0807-10-00-00-0



Optional accessories



Pneumatic motor
Product Code: SLN-0200-15-00-00-0



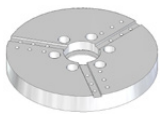
Electric motor 230 V
Product Code: SLN-000094

Electric motor 115 V US plug
Product Code: SLN-000102

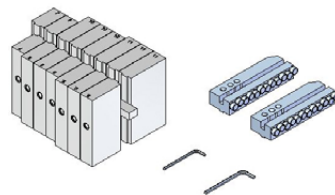
Electric motor 115 V UK plug
Product Code: SLN-000120



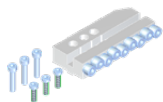
Connection set for electric motor
Product Code: ZST-0200-99-01-00-0



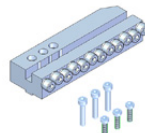
Spindle disc suitable for three tool bit holders
Product code: TRC-0807-05-00-00-0



Extension set for OD \varnothing up to 355 mm (14")
incl. 2 extended tool bit holders and jaws 7, 8, 9, 10, 11
Recommended for pipe wall thickness up to 7 mm (0.26")
Product Code: ZST-0807-08-00-00-0



Regular tool bit holder ID 84-269 mm max OD up to 273 mm
Product code: OBS-0807-99-01-00-0



Extended tool bit holder max OD up to 355 mm
Product code: OBS-0807-99-02-00-0



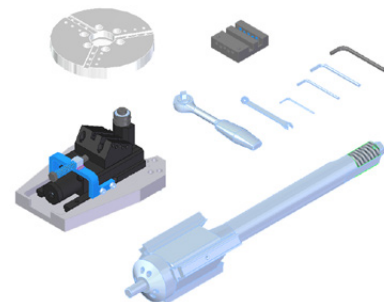
Air preparation set
Product Code: ZST-000021



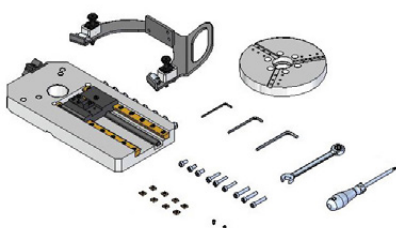
Small expanding mandrel set incl. jaws I, II, III, IV for pipe ID \varnothing 38 - 86 mm (1.5 to 3.39")
Product Code: ZSP-0200-05-00-00-2



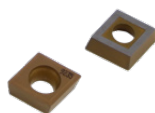
Large expanding mandrel for pipe ID \varnothing 126 - 296 mm (5 to 11.65") with standard jaws, and pipe ID \varnothing 219 - 376 mm (8.62 to 14.80") with optional extension set
Product Code: TRZ-0807-04-00-00-0



Oval attachment set incl. large mandrel for pipe ID \varnothing 126 - 296 mm (5 to 11-5/8") and spindle disc for three tool bits holders
Product Code: PRK-0807-07-00-00-0



Flange facing attachment incl. spindle disc for three tool bits holders
Product Code: PRK-0807-06-00-00-0



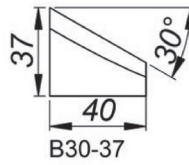
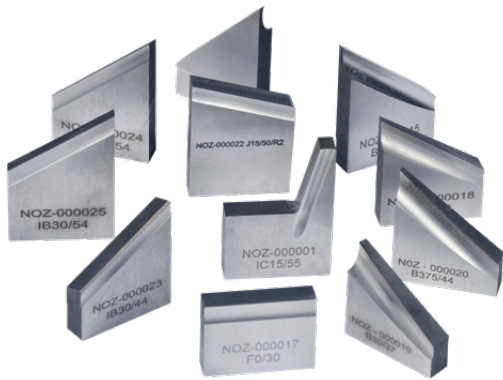
Flange facing insert
Product Code: PLY-000533



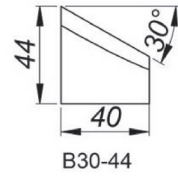
Flange facing insert fixing screw (suitable for cutting inserts PLY-000533)
Product Code: SRB-000465

Flange diameter	90-508 mm (3.54-20")
Automatic feed range	180.5 mm (7.11")
Diameter of rotating parts	569.4 mm (22.42")
Pipe ID	84-269 mm (3.31-10.59") using the standard expanding mandrel 219-376 mm (8.62-13.74") using the large expanding mandrel and jaws from extension set
Feed per rotation	0.33 mm (0.013", with one tripper block engaged) 0.66 mm (0.026", with two tripper blocks engaged)

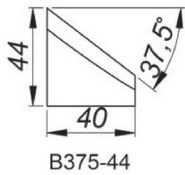
Standard and custom made tool bits



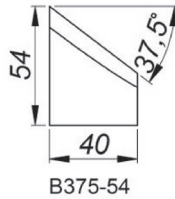
30° Beveling Tool Bit,
Height 37 mm [B30/37]
Product Code: NOZ-000019



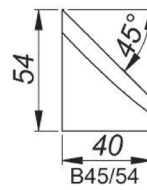
30° Beveling Tool Bit,
Height 44 mm [B30/44]
Product Code: NOZ-000018



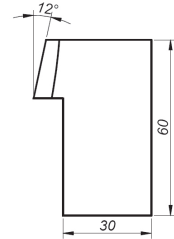
37.5° Beveling Tool Bit,
Height 44 mm [B375/44]
Product Code: NOZ-000020



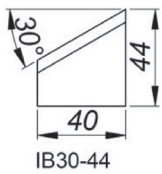
37.5° Beveling Tool Bit,
Height 54 mm [B375/54]
Product Code: NOZ-000015



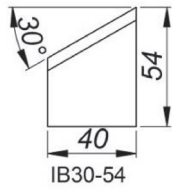
45° Beveling Tool Bit,
Height 54 mm [B45/54]
Product Code: NOZ-000021



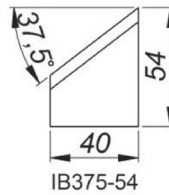
12° Special Tool Bit
Height 60 mm
Product Code: NOZ-000086



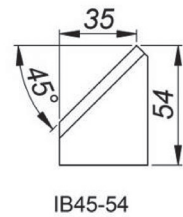
30° Internal Beveling Tool Bit,
Height 44 mm [IB30/44]
Product Code: NOZ-000023



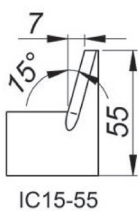
30° Internal Beveling Tool Bit,
Height 54 mm [IB30/54]
Product Code: NOZ-000025



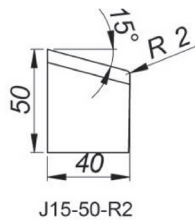
37.5° Internal Beveling Tool Bit,
Height 54 mm [IB375/54]
Product Code: NOZ-000024



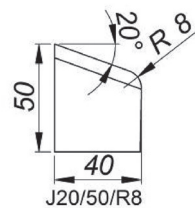
45° Internal Beveling Tool Bit,
Height 54 mm [IB45/54]
Product Code: NOZ-000026



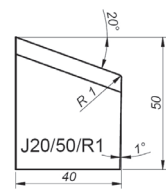
15° Internal Calibration Tool Bit,
Height 55 mm
[IC15/55]
Product Code: NOZ-000001



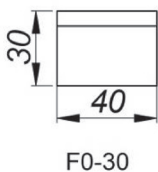
15° J-Beveling Tool Bit,
Height 50 mm, Radius 2mm
[J15/50/R2]
Product Code: NOZ-000022



20° J-Beveling Tool Bit,
Height 50 mm, Radius 8mm
[J20/50/R8]
Product Code: NOZ-000016



20° J-Beveling Tool Bit,
Height 50 mm, Radius 1mm
[J20/50/R1]
Product Code: NOZ-000085



Facing Tool Bit,
Height 30 mm [F0/30]
Product Code: NOZ-000017

Custom made versions of tool bits are available on request.
Tool bits could also be coated to increase their durability.

