

■ BM-20plus | PORTABLE BEVELLER

BM-20plus is an easy-to-use, portable heavy-duty machine designed for beveling steel plates and pipes prior to welding.

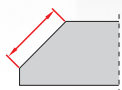
The machine is fitted with two rotary milling heads, each holding five 4-sided indexable inserts, allowing smooth operation and exceptional efficiency.

BM-20plus has a state of the art electronic motor overload module protecting the operator, the machine and the tooling.

It is equipped with guide rolls, which make it easy and light to operate.

■ Features:

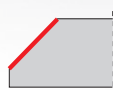
- Portable, heavy-duty machine
- Equipped with guide rolls for easy operation
- Automatic motor overload protection
- Fitted with two milling heads for smooth and efficient operation
- Adjustable bevel angle, 15°- 60°



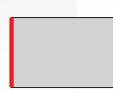
Max. bevel width
21 mm



Bevel angles
15°-60°
or 0° (option)



Top beveling



Facing off
(option)



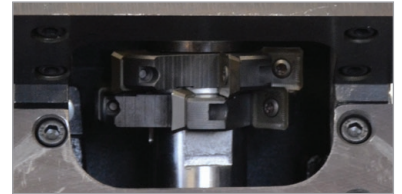
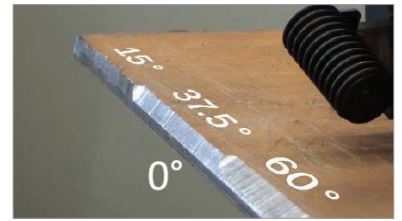
Round plate
beveling
(option)



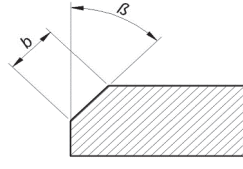
Pipe beveling
OD 150-300 mm (option)
OD 260-600 mm (option)

BM-20plus TECHNICAL SPECIFICATION

Power supply	1~ 110-120 V, 50-60 Hz 1~ 220-240 V, 50-60 Hz
Power	1550/1600 W (for 50/60 Hz, at 220-240 V) 1700/1850 W (for 50/60 Hz, at 110-120 V) 1600 W (for 60 Hz, at 110-120 V)
Spindle speed	2780-3340 rpm (at 230 V) 2740-3290 rpm (at 115 V)
Tooling	Two milling heads with 10 square cutting inserts
Maximum bevel width (b)	21 mm (13/16") [drawing 1]
Bevel angle (β)	15-60° [drawing 1]; 0° (option)
Weight	22 kg (49 lbs)
Part number	UKS-0539-10-20-00-0 (230V/50Hz) UKS-0539-10-10-00-0 (115V/60Hz)



β	15°	30°	45°	60°
b	21 mm	20.5 mm	21 mm	20.5 mm



 Cutting Insert (1 piece),
sold 10pcs/box
Product code: PLY-000282

 Cutting Insert HD (1 piece),
sold 10pcs/box
Product code: PLY-000591

Drawing 1
Maximum bevel width
depending on the angle

2 rotary milling heads, each holding five
4-sided indexable inserts



Plate beveling



Plate facing-off (option)



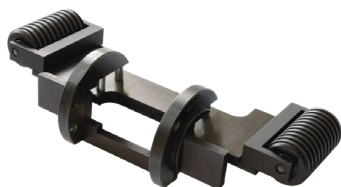
Round plate beveling (option)



Pipe beveling (option)

Optional accessories:

Pipe beveling attachments:



Facing off attachment (0°)
(enables beveling at zero degree)
Product code: ZSP-0075-32-00-00-1



150-300 mm (6"-12")
Product code: ZSP-0075-31-00-00-0



260-600 mm (10"-24")
Product code: ZSP-0075-31-00-00-1



Round plate beveling attachment:
Minimal outer radius R=1000 mm (40")
Minimal inner radius R=1000 mm (40")
Max bevel width 19 mm
Product code: ZSP-0539-10-00-00-0

All information is subject to change without notice. 21.11



PROMOTECH Sp. z o.o.
ul. Elewatorska 23/1, 15-620 BIAŁYSTOK, POLAND
tel. (+48 85) 678 34 05, fax (+48 85) 662 78 77
marketing@promotech.eu www.promotech.eu

Your local dealer:

